

Two Million Years of Art in Human Evolution

AH 224 Paleolithic Art, Spring 2012

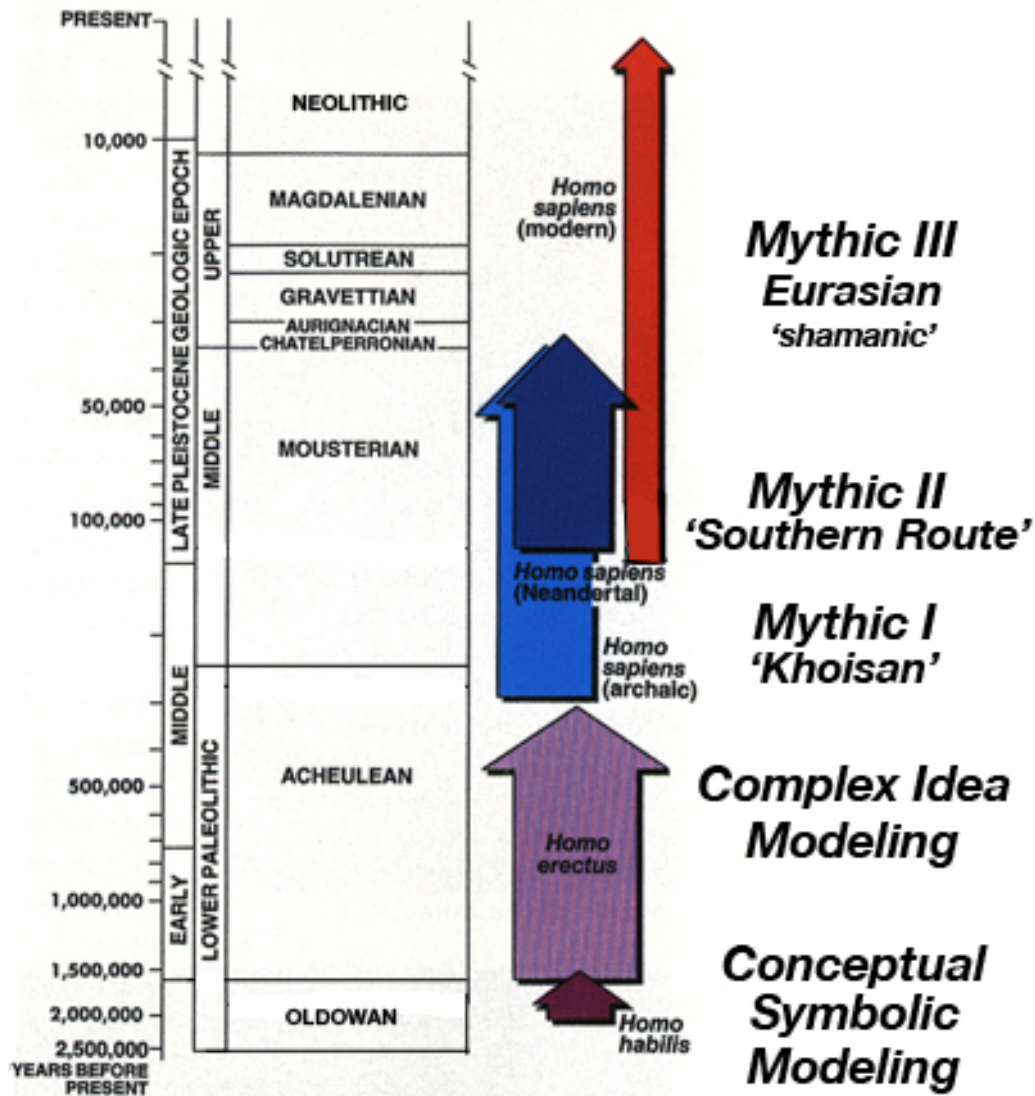
James Harrod, Ph.D.

Adjunct Instructor in Art History, Maine College of Art, Portland, Maine

Director, Center for Research on the Origins of Art and Religion

originsnet.org (pleistocenecoalition.com)

MYTHO-STRATIGRAPHY



4 Meme Model: 2MY Evolution of Art, Symbol & Myth

<i>Era and Techné</i>	<i>Four Meme Model</i> (James Harrod)
<p>Oldowan EO ~2.6 to 2.0 Ma 'Classic' ~2.0 to 1.4 Ma Developed ~1.7 to 1.2 Ma</p>	<p>'Rudimentary Symbolic' = 2.0-3.5 yrs // human = great ape cognition (A. Russon 2004) = <i>Australopithecus</i> (similar cognitive level by triangulation to common great ape ancestor) First 'art object': 'animacy in stone'; 'animated spirit that inhabits the body'</p> <p>Conceptual-Symbolic Modeling = <i>Homo habilis/rudolfensis</i> (out-of-Africa) First Metaphor = 'core-seed-sustenance-essence in interpersonal interaction'; 'rhomboids of the mind' First Ethos = carnivore axis First Joke: 'hit the baboon head' anvil (drill cupules)</p>
<p>Acheulian <i>(sensu lato)</i> EA ~1.7 to 1.0 Ma MA ~1.0 Ma to 500 ka LA ~650 to 200 ka FA ~300 to 150 ka</p>	<p>Complex Idea Modeling = <i>Homo erectus/ergaster</i> (out-of-Africa) Biface pairing of complementary shapes (<i>contraria sunt complementa</i>, Niels Bohr; <i>coincidentia oppositorum</i>, C. G. Jung; 'co-poiesis', Bracha Ettinger) Sheath, the Womb Source of Animacy (Life-Giver) & Vehicle, Cutting Spirit, Energy of Initiative (Death-Giver) colorants, marking traditions, mortuary practice, adornments, anthropomorphs & zoomorphs</p>
<p>Middle Paleolithic / Middle Stone Age EMP ~300 to 40 ka MMP ~150 to 60(100) ka LMP ~60 to 30/35 ka</p>	<p>Mythic I & II EMP = <i>archaic Homo sapiens</i> / MMP = <i>Homo sapiens sapiens</i> (out-of-Africa) Beings of the Dreaming, Creatrix of Life-Forms, stone arrangements, landscape art, image representation, mortuary practices with grave goods; geometric 'signs'</p> <p>I. 'Gaia' (M. Witzel) = Khoisan II. 'Gondwana' (M. Witzel) = 'Southern Route' Africa to SE Asia & Australia</p>
<p>Upper Paleolithic / Later Stone Age EUP ~150 to 60 ka MUP ~40 to 20 ka LUP ~25 to 10 ka</p>	<p>Mythic III = <i>Homo sapiens sapiens</i> (out-of-SW-Central-Asia) 'Eurasian' (Y. Berezkin) 'Laurasian' (M. Witzel) = Shamanic 6 Worlds Shamanism; Soul Journey, Soul Retrieval; Mother-of-Animals, Master-of-Animals; Geometric Protolanguage, UP(E) array of 12 female and 12 male spiritual transformations (J. Harrod)</p>

Templeton (2010, 2002): genetics = 3 waves out-of-Africa – 1.9 Ma; 650 ka; 130 ka; 1 out-of-Asia (recent)

A New Paradigm

- Wave I: Dispersal of *Homo rudolfensis/habilis*, with classic Oldowan pebble-core tool tradition, out-of-Africa, ~2.0 Ma to 1.7 Ma

- Wave II: Dispersal of *Homo erectus*, with Middle Acheulian or Developed Oldowan-like tool tradition, out-of-Africa, ~1.0 Ma to 800 ka

- Wave III: Dispersal of *Homo sapiens* out-of-Africa or SW Asia with Mid-Middle Paleolithic technology, ~150 to 60 ka

- Wave IV: Upper Paleolithic → 60 ka Global Rock Art Heritage

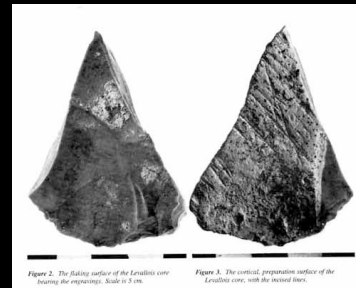
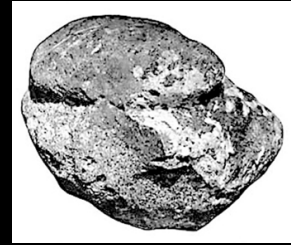


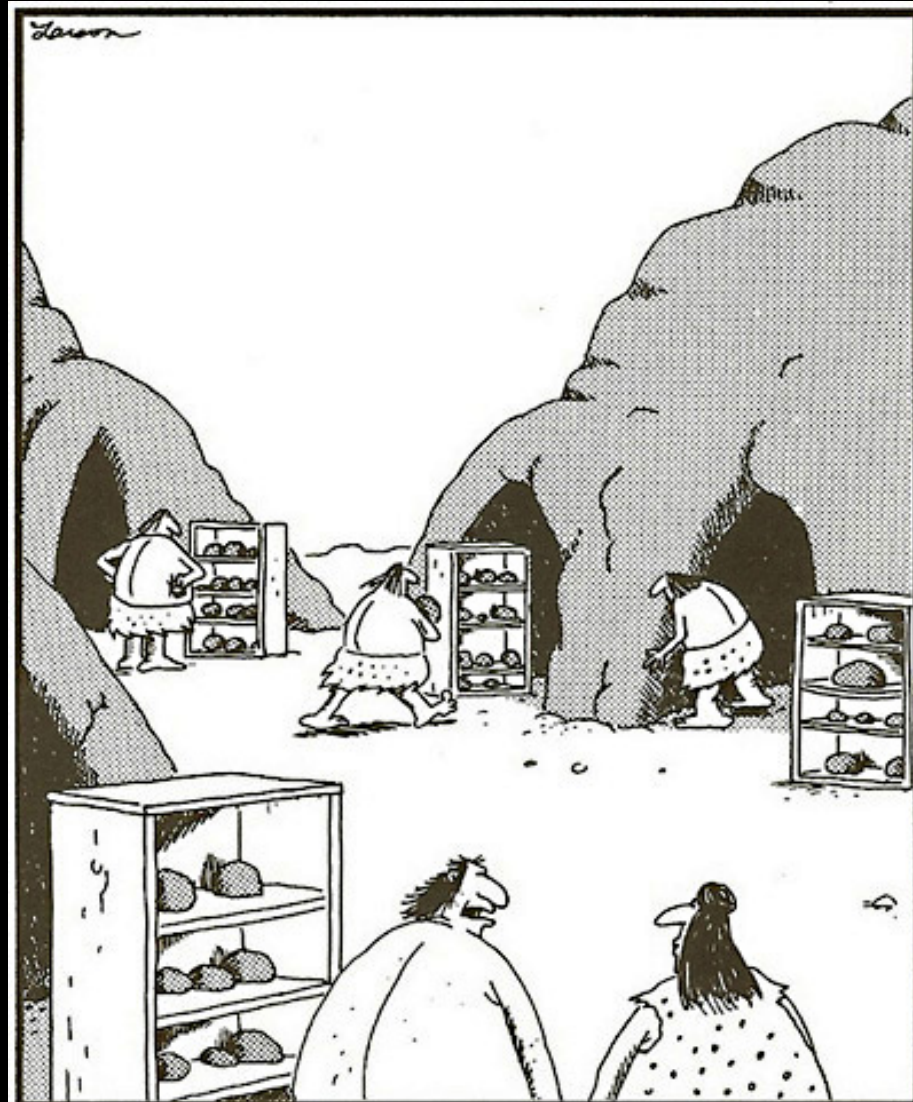
Figure 2. The flaking surface of the Levallois core showing the enlèvement. Scale is 3 cm. Figure 3. The vertical, preparation surface of the Levallois core, with the lateral scars.



Later Acheulian

Symbolic Behaviors

- Collection/manuporting of exotic objects: Wonderwerk Cave; Hoxne; Swanscombe
- Use of pigment: ocher nodules and wear faceted crayons: Wonderwerk Cave; Ambrona; Terra Amata; Maastricht-Bélvèdere; Ede II NL
- Self-adornment: Bedford UK; El Greifa Libya; Repolusthölle Austria
- Pecked, abraded, incised, serrated or notched objects: Wonderwerk Cave; Port-Launay;
- Marking traditions, including 'cupules': Bilzingsleben; Bhimbetka; Daraki-Chattan; Pampau
- Geometric artifacts: Maihar India; Bhimbetka; Jabeek NL; Ede II NL; Pampau;
- Image/Representation: Decorated bifaces, at least 9 sites: Israel, UK, France, Monaco, NL; Figurines: Berekhat Ram; Tan Tan; Erfoud; also Swanscombe; Clacton; Vértesszöllös, Hamburg-Wittenbergen; Pampau; Boukoul NL; Beegden NL
- Stone/bone arrangements/depositions: Bhimbetka handaxe cleaver flakes in crevice
- Exotic tools (too big, too heavy, too many, unused, exquisite): Boxgrove; Shrub Hill; Furze Platt; Cuxton
- Mortuary practice: Bodo (defleshing); Atapuerca (biface deposition); Pontnewydd (caching)

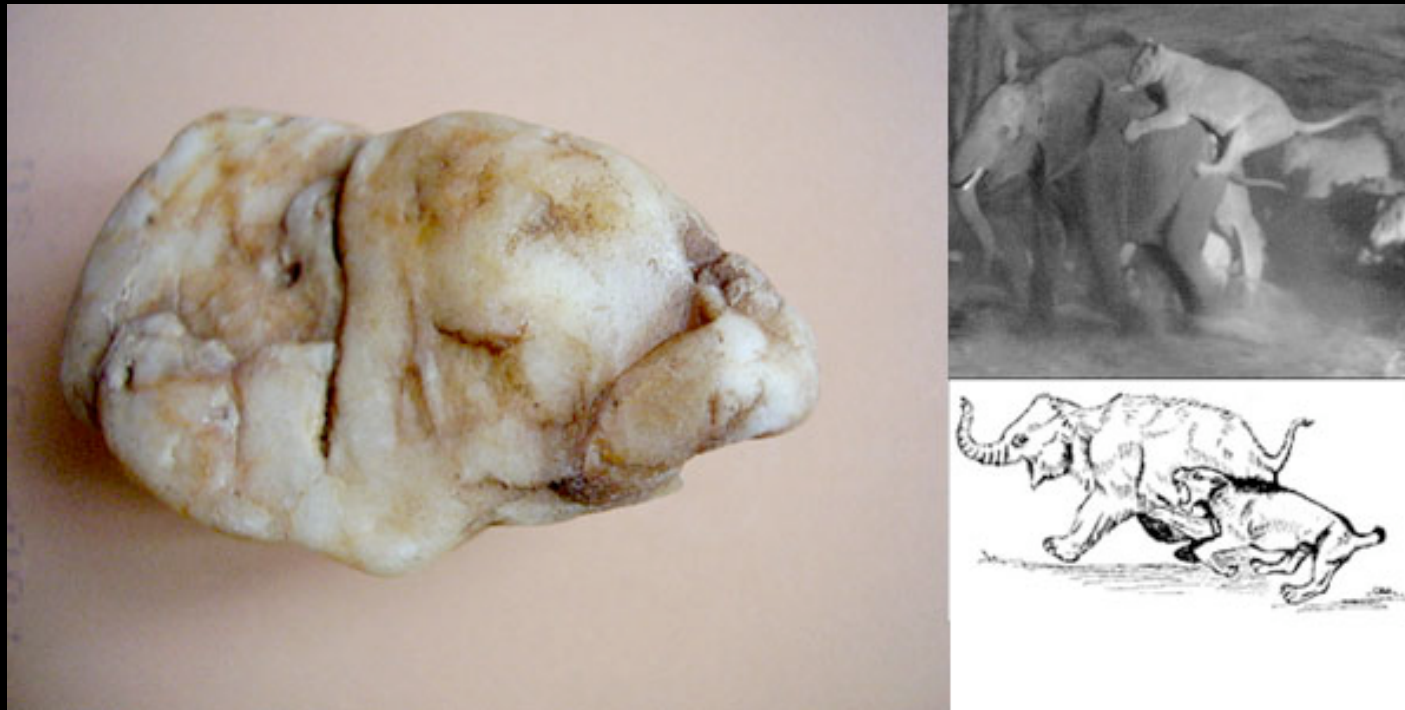


"You know, I used to like this hobby. ... But shoot! Seems like everybody's got a rock collection."

Later Acheulian – Northwest Europe



If this came from a craft shop in Nairobi, what do you see?



Forest Elephant / Lion polymorphic sculpture
Boukoul, Netherlands, Holstein or Cromer IV Interglacial, ~360-520 ka

Interpretation: 2 'elephants' (perhaps mother and juvenile) attacked by 2 'lions' (bottom 2 heads?);
and also 'elephant giving birth', thus 'death/life complementarity'; also 'vulva'? under belly elephant
Collector: Jan van Es; Photo: Jan van Es; Interpretation: Jan van Es, James Harrod; Collage James Harrod



Elephant / Lion / 'core mystery' or 'egg' combination
Boukoul, Netherlands, Holstein or Cromer IV Interglacial, ~400-500 ka

Interpretation (Jan van Es and James Harrod): 'elephant' or 'mammoth' attacked by 'lion' (possibly lion-headed human hunter with human legs); trunk curves up to a mineral inclusion, metaphorically 'core or inner mystery' or 'egg nucleus'.

Collector: Jan van Es; Photo: Jan van Es; Interpretation: Jan van Es, James Harrod; Collage James Harrod



Discussion on the cast of the Hamburg-Wittenbergen female figurine , Hamburg 1989

Ccast of figurine on table. L: Werner Ehrich, Research Assistant to Walter Matthes, Hamburg University; C: Ursel Benekendorff; R: James Harrod; the week prior to our approved visit to the HU Archaeology Lab to see Matthes artifacts, HU sent 6 crates of Matthes' artifacts from storage to be crushed into gravel (UB personal communication 1989); Harrod on AAR Research Grant, 1989.



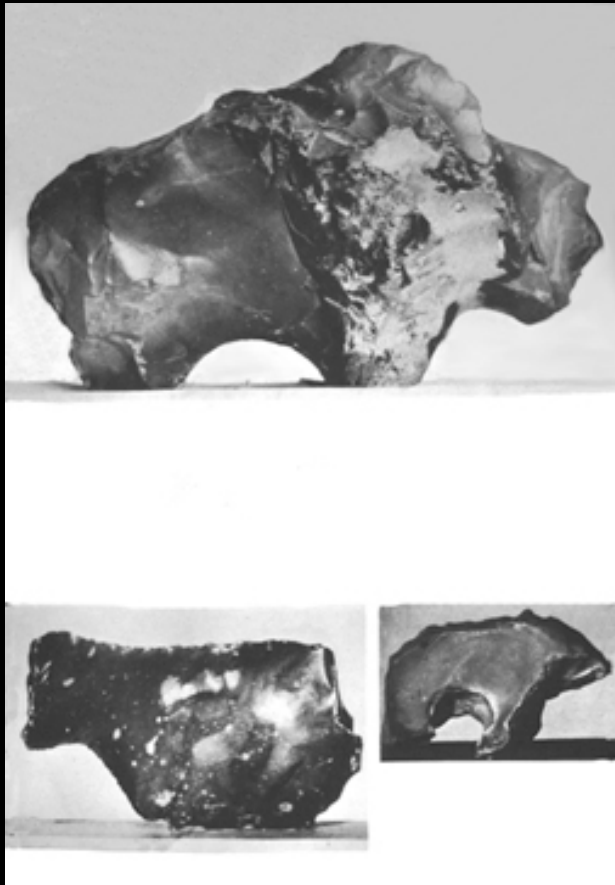
Hamburg-Wittenbergen, Germany, ~250,000 BP

Elbe River Valley, excavated Walther Matthes, University of Hamburg
Clactonian, Treene interglacial, geologic dating, Alfred Rust and Gustav Steffens (1962)
photo Matthes, W. (1966 Abb. 1)



Hamburg-Wittenbergen, Germany, ~250,000 BP

Exhibition case, hominin heads and profiles, Walther Matthes, University of Hamburg
Clactonian, Treene interglacial, geologic dating, Alfred Rust and Gustav Steffens (1962)
photo Matthes, W. (1963: Tafel 1.2)

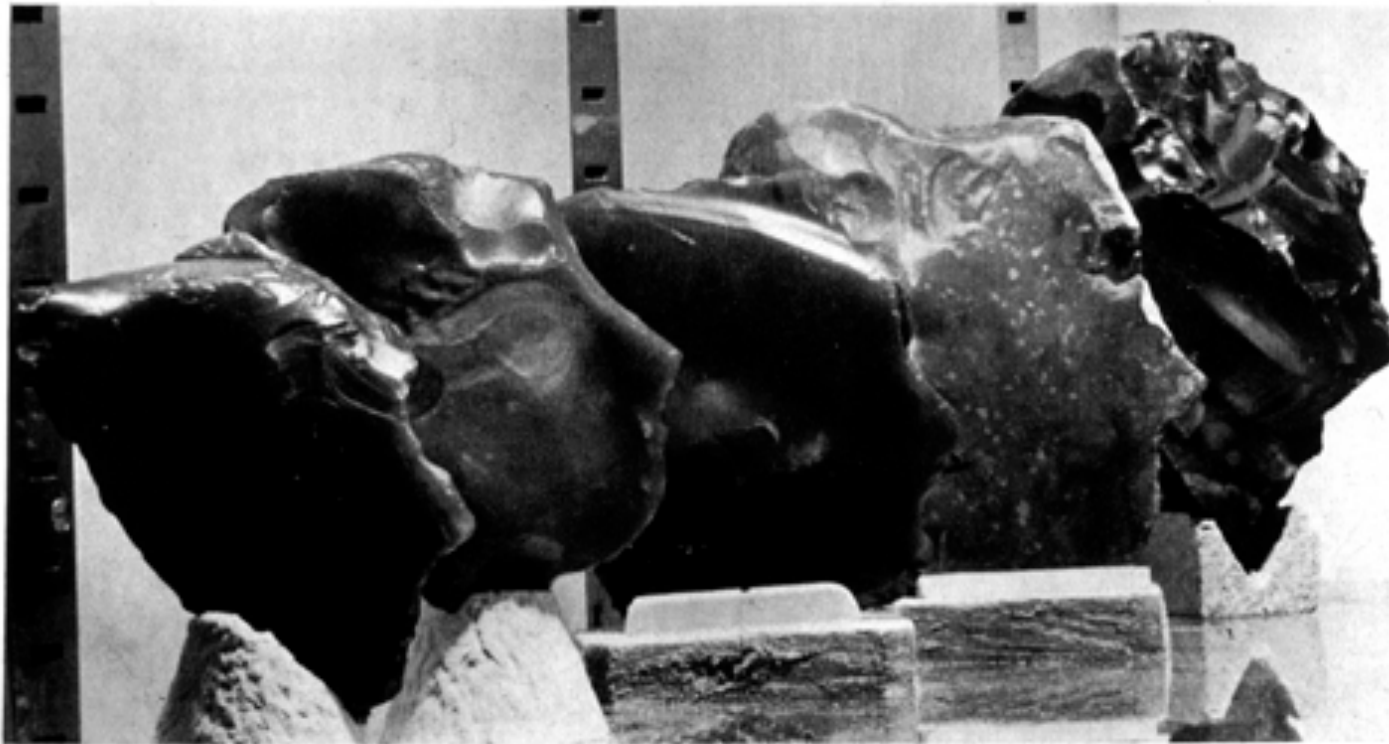


Hamburg-Wittenbergen, Germany, ~250,000 BP

Identified by Walther Matthes as as sculptures of (top) bison; (bottom left) calf; (bottom right) bear. Matthes, W. (1963: Taf. 7.1,2,3)

TAFEL 2

MATTHES



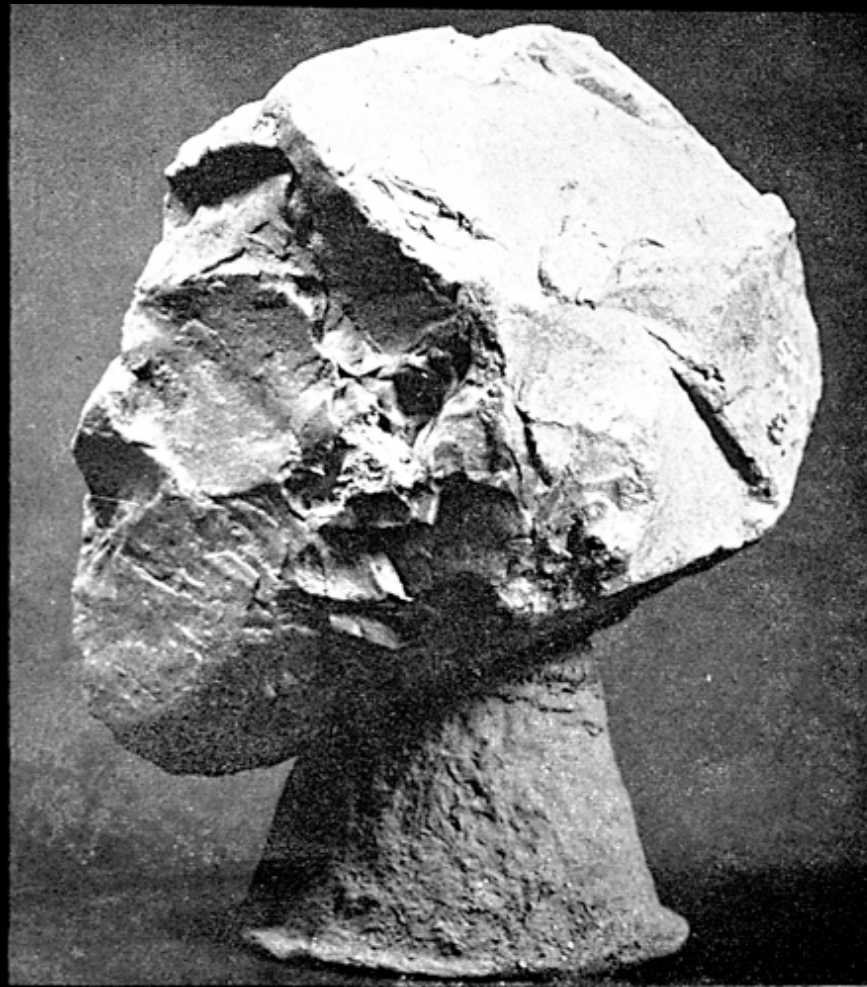
Hamburg-Wittenbergen, Germany, ~250,000 BP

Stereotypical profile heads, Matthes, W. (1963: Tafel 2.1)



Hamburg-Wittenbergen, Germany, ~250,000 BP

Stereotypical profile heads, Matthes, W. (1963: Tafel 2.2)



Hamburg-Wittenbergen, Germany, ~250,000 BP

Stereotypical profile head, Matthes, W. (1964/65: Bild 38.1)



Hamburg-Wittenbergen, Germany, ~250,000 BP

Stereotypical profile heads, Matthes, W. (1966: Abb. 5, 18, 19, 22, 23)



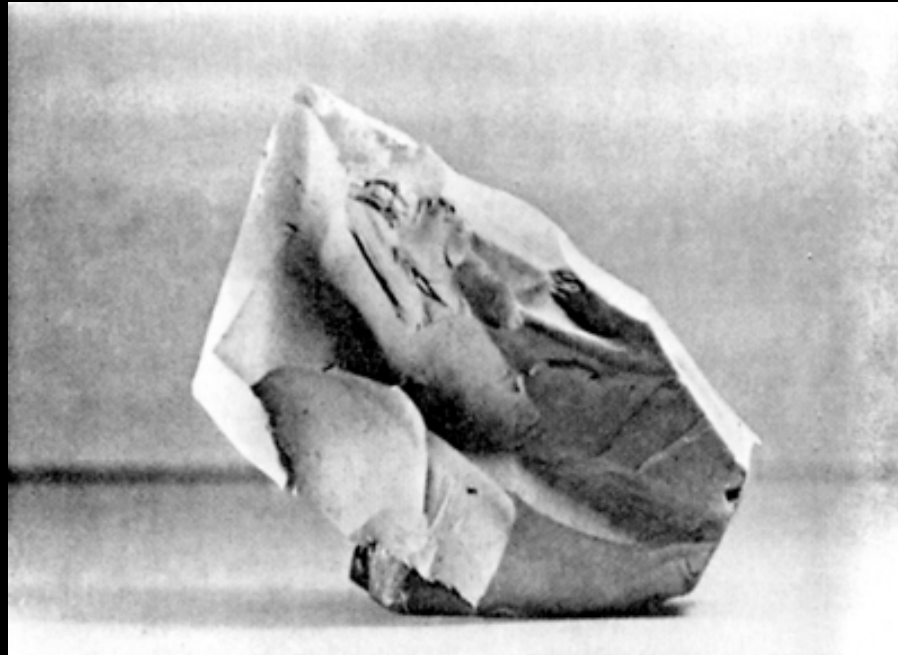
Hamburg-Wittenbergen, Germany, ~250,000 BP
Stereotypical one-eye open one-eye closed mask, Matthes, W. (1966: Abb. 20)



Hamburg-Wittenbergen, Germany, ~250,000 BP
Stereotypical one-eye open one-eye closed mask, Matthes, W. (1966: Abb. 20)



Hamburg-Wittenbergen, Germany, ~250,000 BP
Stereotypical one-eye open one-eye closed mask, Matthes, W. (1966: Abb. 20)

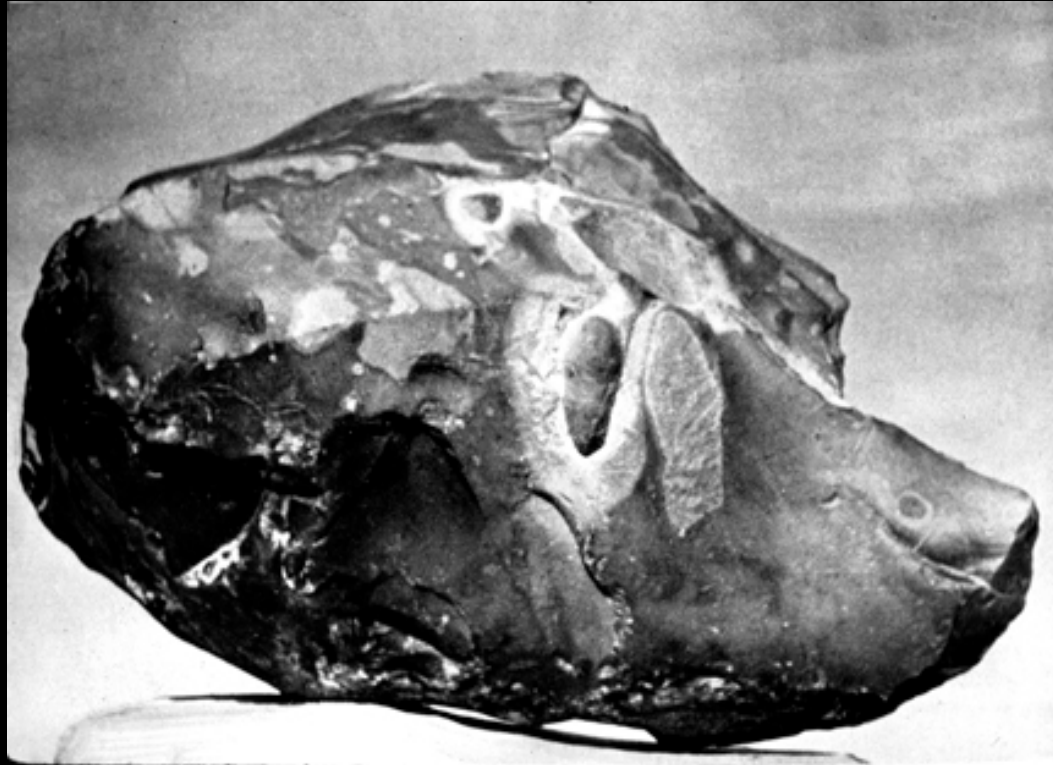


Hamburg-Wittenbergen, Germany, ~250,000 BP

Feline head, Matthes, W. (1963: Tafel 4.2)

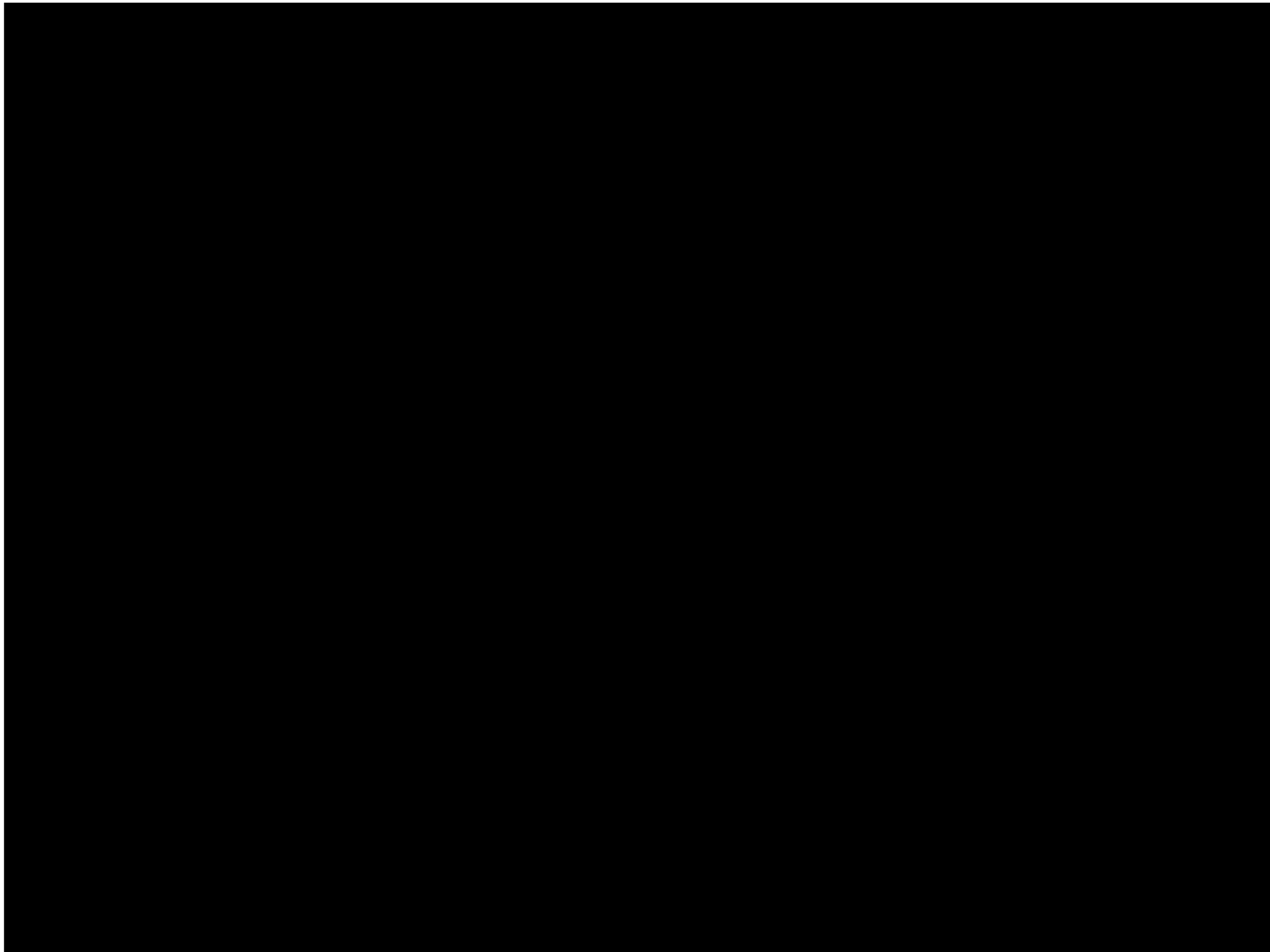


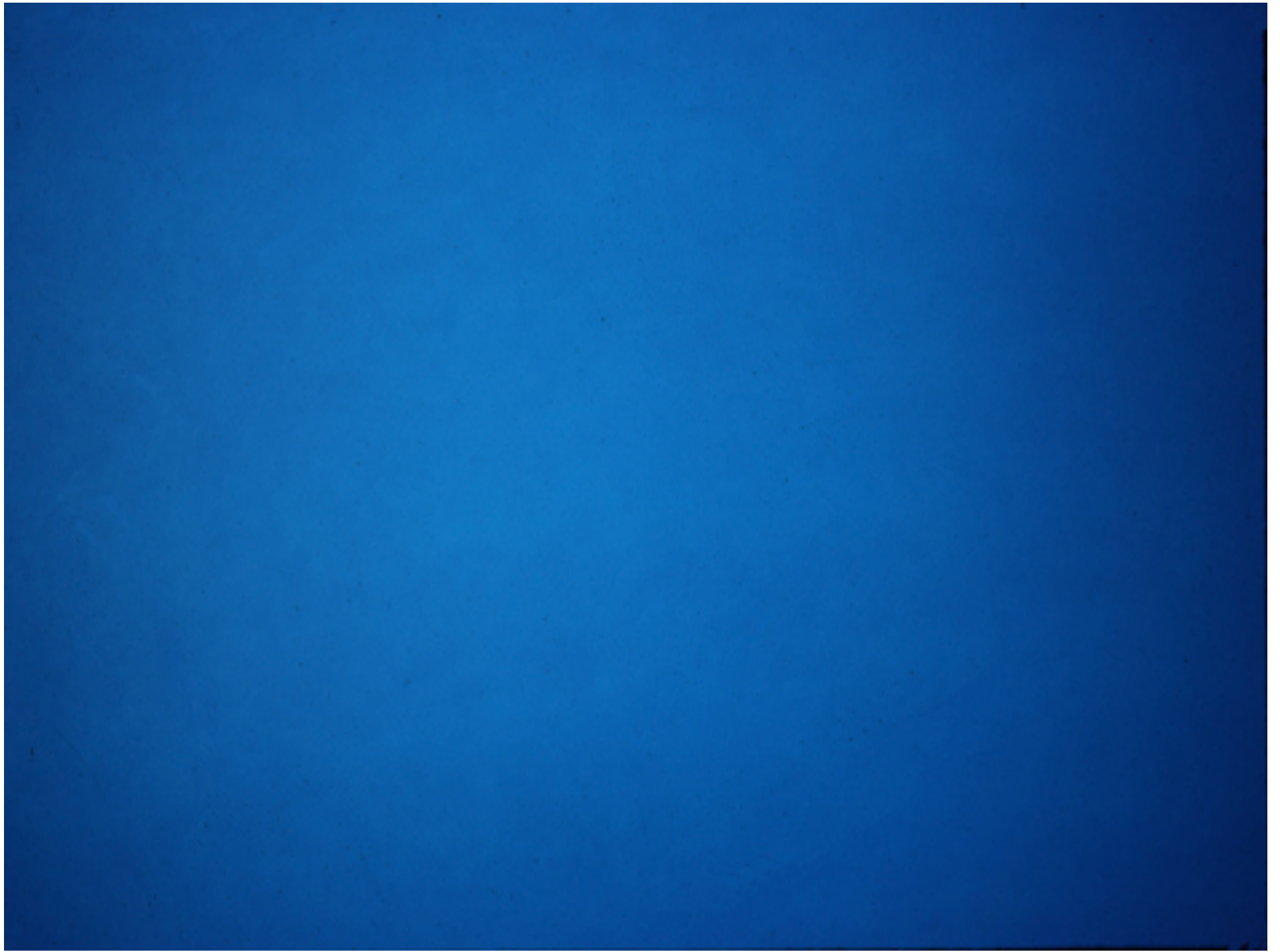
Hamburg-Wittenbergen, Germany, ~250,000 BP
Stereotypical bird form, Matthes, W. (1969: Bild 33)



Hamburg-Wittenbergen, Germany, ~250,000 BP

Bear's head, Matthes, W. (1963: Tafel 4.1)

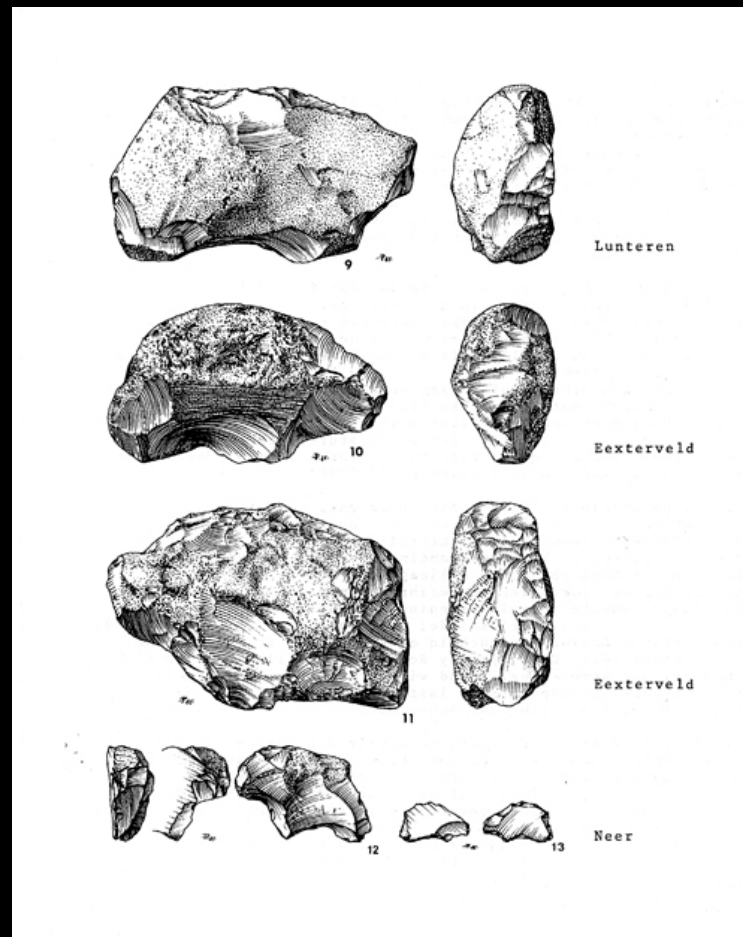






Archeologische Berichten Group, Elst, NL

L: Ben Duppen, Editor, *Archeologische Berichten* (Elst, NL); Center L: Ursel Benekendorff; Center R: Jan Evert Musch; R: James Harrod; Harrod on AAR Research Grant, 1989.

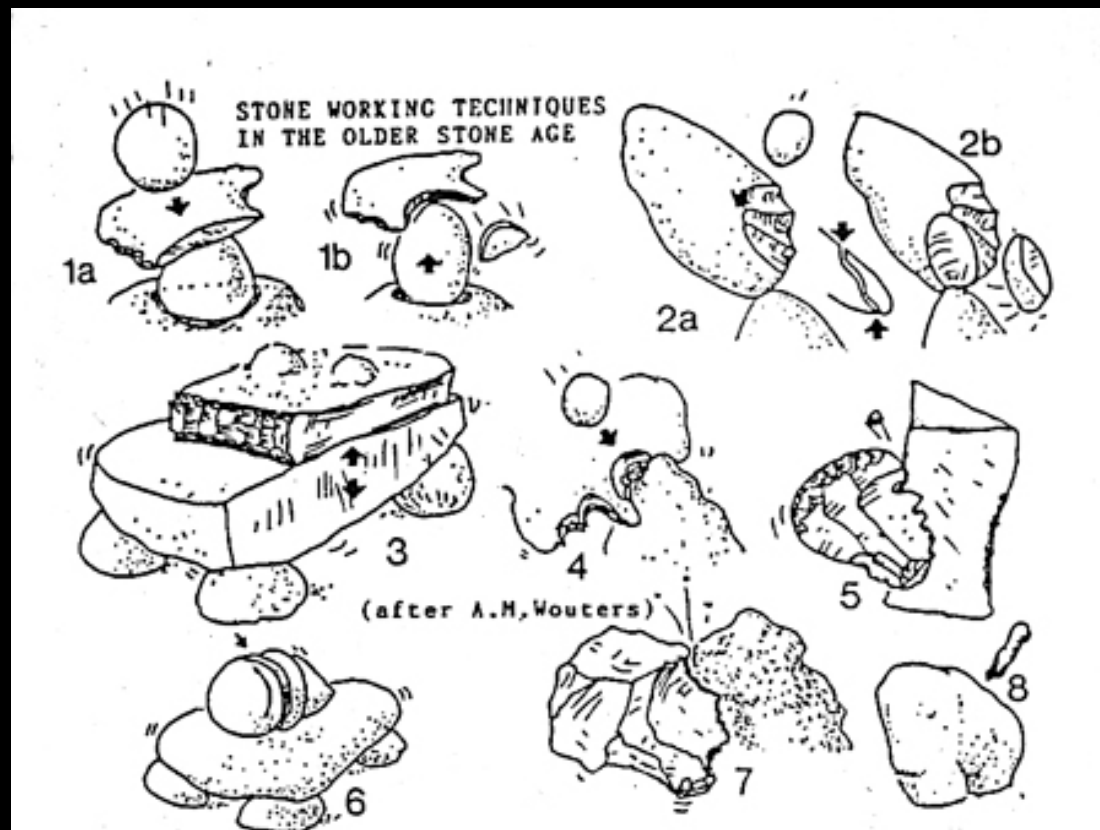


'Bears', NW Europe, Later Acheulian Period

Nr. 9: 'Bear', Lunteren (Ede II sandpit), Cromerian. Found A. M. Wouters 1982; identified J. E. Musch; collection J. E. Musch. Heidelbergian, site discovered M. Franssen, *Archaeologische Berichten* 13. Elst, NL.
 Nr. 10, 11: 'Bears', Eexterveld. Discovered J. E. Musch 1983; collection J. E. Musch. From a glacial outwash layer that locally only contains pre-Mindel artifacts (VOA, Abbevillian) and older.

Nr. 12,13: 'Bears', Neer (sandpit), Limburg, NL.; Heidelbergian found in profusion with many microlithic artifacts. Found J. Beeren; collection J. E. Musch.

Illustration © Jan Evert Musch. Musch, J. E. 1987. Beestachtig en beregoed (deel 1). *Archaeologische Berichten* 18:108-129. Elst, NL; p. 126.



NW Europe Later Acheulian Period 'On-Anvil' Techniques

1a, 1b: 'Egg-in-cup' anvil

2a, 2b: 'Contracoupe' or 'bipolar' technique; mainly used in Acheulian traditions

3: 'Buffer' technique, snapping off of a straight facet; 4: Notching on pointed (conical) anvil

5. Small notches, pressure along crest of flint (several portraits retouched in this way)

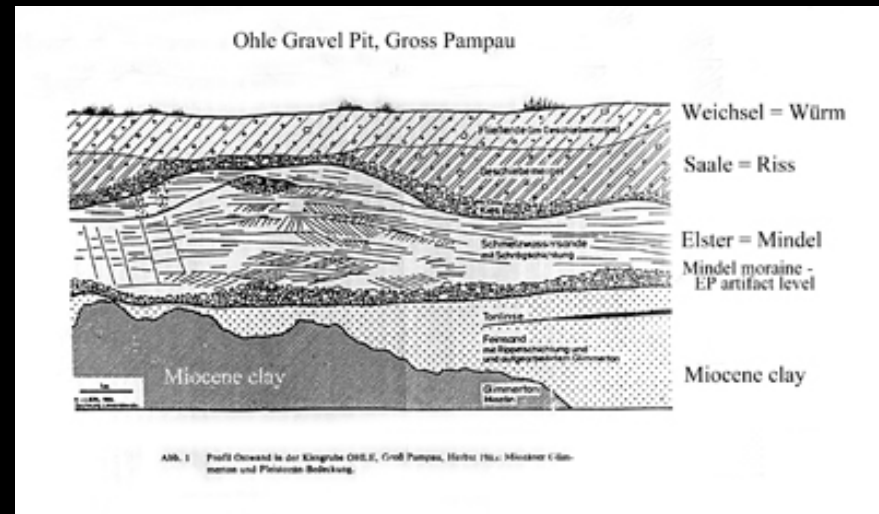
6. 'Curling' flake due to ricochet blow (requires long training)

7. Pressure flaking along rough polymorph anvil; 8. Pecking (mainly with metamorphic rock)

Illustration: J. E. Musch, after A. M. Wouters. Musch JE. 1986 revised 1990. Animal Farm: Palaeolithic Sculpture from the Northwest European Plains. Precirculated paper, World Archaeological Congress 1986.

Stichting Archaeologische Berichte, Elst, NL: p. 22.

Ohle Pit, Gross Pampau, Germany
~525,000 to 400,000 BP



Ohle Pit, Groß Pampau, Germany, Mindel gravels, $\geq 400,000$ BP

Site documented in Benekendorff, U. (1990). From the information recorder stone to a picture book of the stone age. *Archaeologische Berichten* 20:14-28 and 43-65 (Elst, NL); Photos: James Harrod, AAR Research Grant, 1989.



Ohle Pit, Groß Pampau, Germany

Photo: James Harrod, 1989. Site documented in Benekendorff, U. (1990). From the information recorder stone to a picture book of the stone age. *Archaeologische Berichten* 20:14-28 and 43-65 (Elst, NL)



Ohle Pit, Groß Pampau, Germany, Mindel gravels, $\geq 400,000$ BP

Site documented in Benekendorff, U. (1990). From the information recorder stone to a picture book of the stone age. *Archaeologische Berichten* 20:14-28 and 43-65 (Elst, NL)



Ohle Pit, Groß Pampau, Germany

Jan Evert Musch and Ursel Benekendorff, Ohle Pit. Photo: James Harrod.
Site documented in Benekendorff, U. (1990). From the information recorder stone to a picture book of
the stone age. *Archaeologische Berichten* 20:14-28 and 43-65 (Elst, NL)



East Wall, Ohle Pit, Groß Pampau, Germany, 1989

Jan Evert Musch. Photo James Harrod, 1989.

Site documented in Benekendorff, U. (1990). From the information recorder stone to a picture book of the stone age. *Archaeologische Berichten* 20:14-28 and 43-65 (Elst, NL)



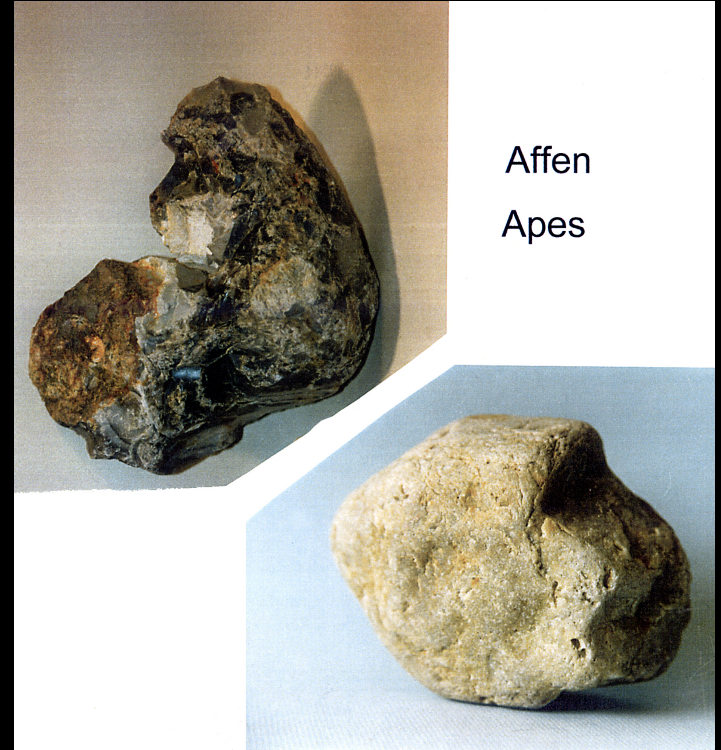
East Wall, Miocene Clays, Fossil Whale Site,
Ohle Pit, Groß Pampau, Germany, 1989

Photo: James Harrod 1989. Site documented in Benekendorff, U. (1990). From the information recorder stone to a picture book of the stone age. *Archaeologische Berichten* 20:14-28 and 43-65 (Elst, NL)



**'Baboon and Macaque Heads'
possibly used as anvils**

Pampau, Germany, Mindle glacial moraine gravels, ≥ 400 kya
Collection - Ursel Benekendorff; photo Ursel Benekendorff



‘Macaque and Baboon-Like Heads’, Pampau, Germany $\geq 400,000$ BP

Groß Pampau, Germany, Mindle glacial moraine gravels, ≥ 400 kya
Collection - Ursel Benekendorff; photo Ursel Benekendorff



Ohle Pit, Groß Pampau, Germany, Mindel gravels, $\geq 400,000$ BP



Ohle Pit, Groß Pampau, Germany, Mindel gravels, $\geq 400,000$ BP



Ohle Pit, Groß Pampau, Germany, Mindel gravels, $\geq 400,000$ BP



Ohle Pit, Groß Pampau, Germany, Mindel gravels, $\geq 400,000$ BP

Stereotypical motif 'one-eye open, one-eye closed.' Without interpretation, I once asked an actor to look at this and tell me what he saw. He said, 'one-eye open, and one-eye wounded, the tragic motif, the pain of Lear.' The figure also has a paradoxical quality, both old wise man and, side view, a child or infant.

Photo James Harrod; collection James Harrod, courtesy Ursel Benekendorff



Ohle Pit, Groß Pampau, Germany, Mindel gravels, $\geq 400,000$ BP

(Photo: (left) Ursel Benekendorff)

Site documented in Benekendorff, U. (1990). From the information recorder stone to a picture book of the stone age. *Archaeologische Berichten* 20:14-28 and 43-65 (Elst, NL)



Ohle Pit, Groß Pampau, Germany, Mindel gravels, $\geq 400,000$ BP



Ohle Pit, Groß Pampau, Germany, Mindel gravels, $\geq 400,000$ BP



Ohle Pit, Groß Pampau, Germany, Mindel gravels, $\geq 400,000$ BP



Ohle Pit, Groß Pampau, Germany, Mindel gravels, $\geq 400,000$ BP



Ohle Pit, Groß Pampau, Germany, Mindel gravels, $\geq 400,000$ BP



Ohle Pit, Groß Pampau, Germany, Mindel gravels, $\geq 400,000$ BP



Ohle Pit, Groß Pampau, Germany, Mindel gravels, $\geq 400,000$ BP

'Boukoulia', Microlithic Later Acheulian
Boukoul, Netherlands, ~400,000 BP (?)



**'Boukoulian,' Microlithic Later Acheulian
Boukoul, Netherlands, ~400,000 BP**

Van Es, J. and Franssen, C.J.H. (1989). Een vroege microkern-traditie van de Peelhorst het Boukoulien.
Archaeologische Berichten 19:6-25;93-133. Elst, NL.



Workbenches stylized as waterbirds, baboon-heads

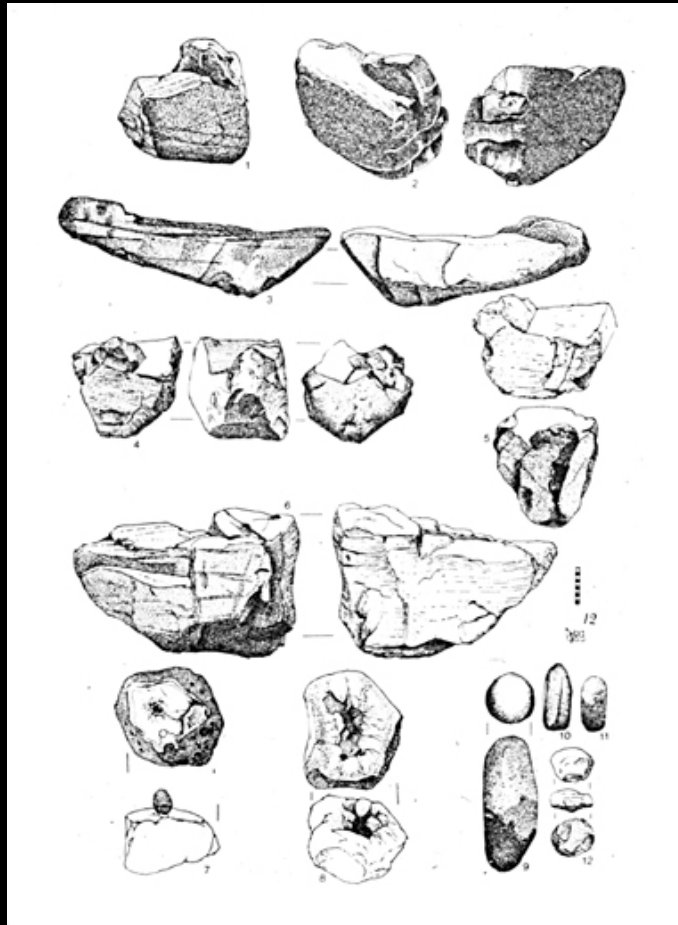
'Boukoulian,' Microlithic Later Acheulian

Boukoul, Netherlands, ~400,000 BP

Van Es, J. and Franssen, C.J.H. (1989). Een vroege microkern-traditie van de Peelhorst het Boukoulien.

Archaeologische Berichten 19:6-25;93-133. Elst, NL.

Photo: B Duppen, Van van Es, J. E. Musch. Special issue on Boukoul/Coquelles. AB19: p. 130.

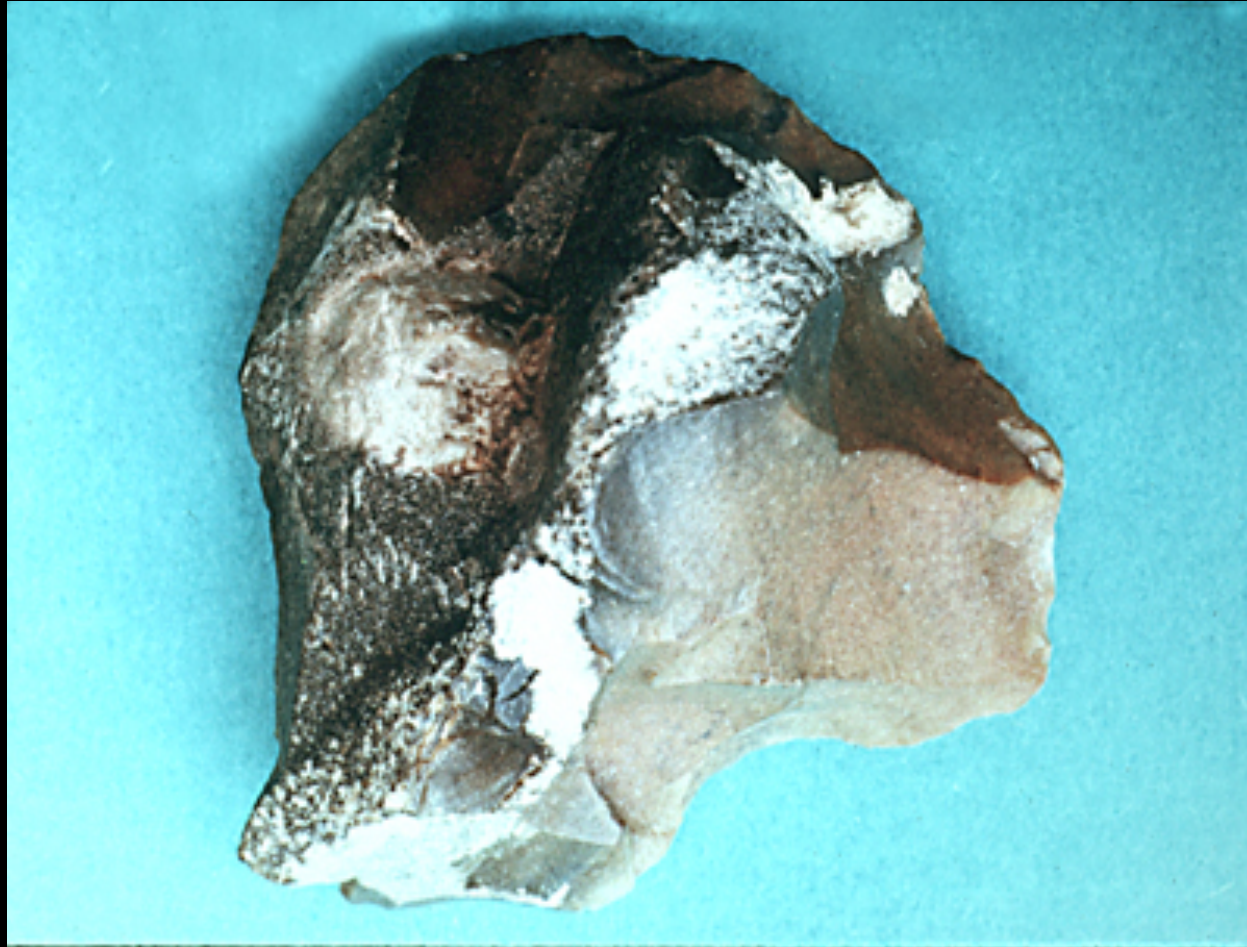


Workbenches and egg-in-cup anvils
'Boukouliaan,' Microlithic Later Acheulian
Boukoul, Netherlands, ~400,000 BP

Van Es, J. and Franssen, C.J.H. (1989). Een vroege microkern-traditie van de Peelhorst het Boukouliaan.

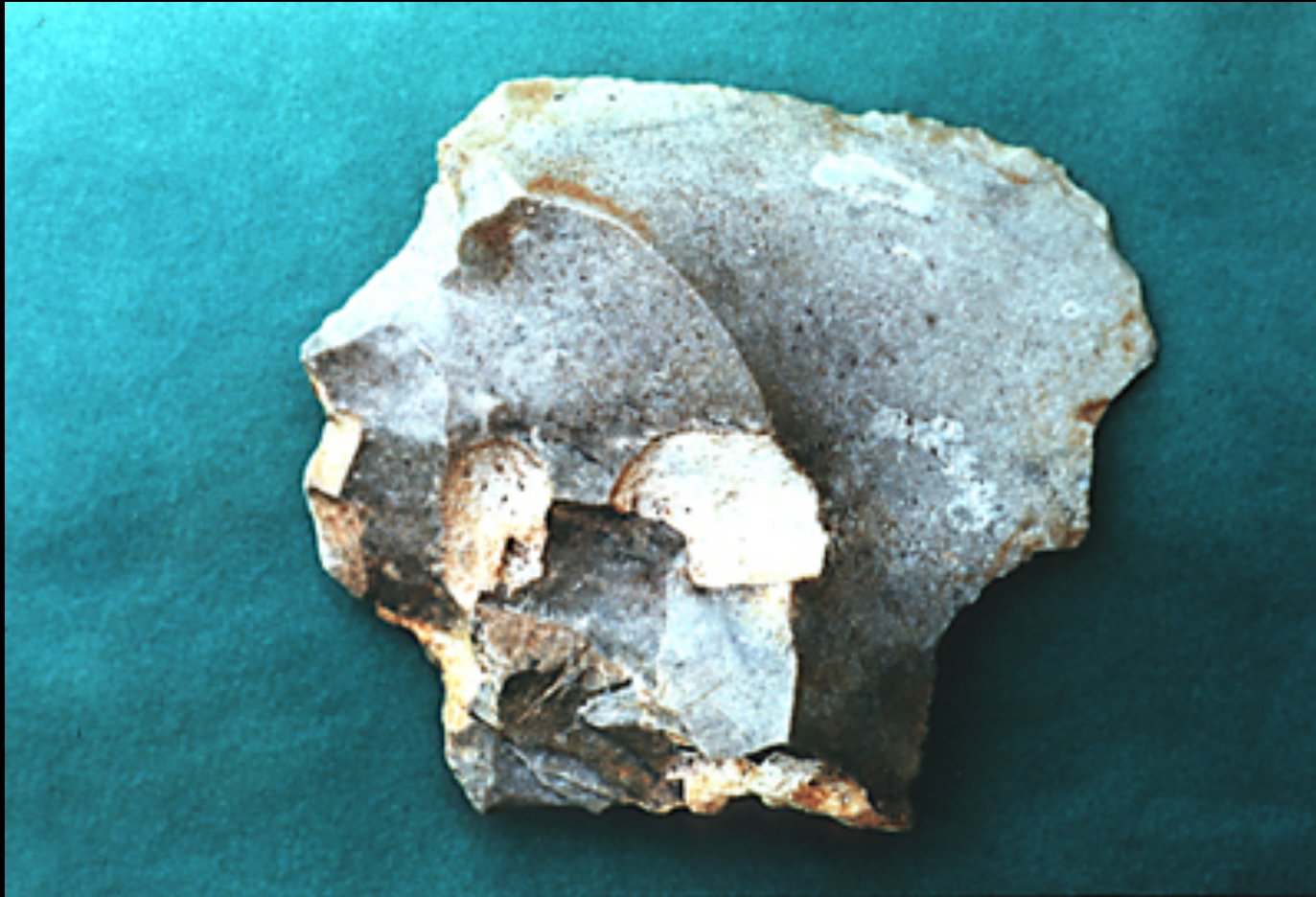
Archaeologische Berichten 19:6-25;93-133. Elst, NL.

Illustration: S. Dijkstra. Special issue on Boukoul/Coquelles. AB19: p. 130.



Rhenen, Netherlands, Treene Interglacial, ~180-250,000 BP

Collection: Franssen, C.J.H. In: Musch JE. 1990. Continuatin picture book: Stone sculptures pliocene-neolithicum. *Archaeologische Berichten* 20:85-107; photo p. 96. Elst, NL.



Rhenen, Netherlands, Treene Interglacial, ~180-250,000 BP

Collection: Franssen, C.J.H. In: Musch JE. 1990. Continuatin picture book: Stone sculptures pliocene-neolithicum. *Archaeologische Berichten* 20:85-107; photo p. 96. Elst, NL.



Rhenen, Netherlands, Treene Interglacial, ~180-250,000 BP

Collection: Lieuwen D. In: Musch JE. 1990. Continuatin picture book: Stone sculptures pliocene-neolithicum.
Archaeologische Berichten 20:85-107; photo p. 97. Elst, NL.

