

Two Million Years of Art in Human Evolution

AH 224 Paleolithic Art, Spring 2012

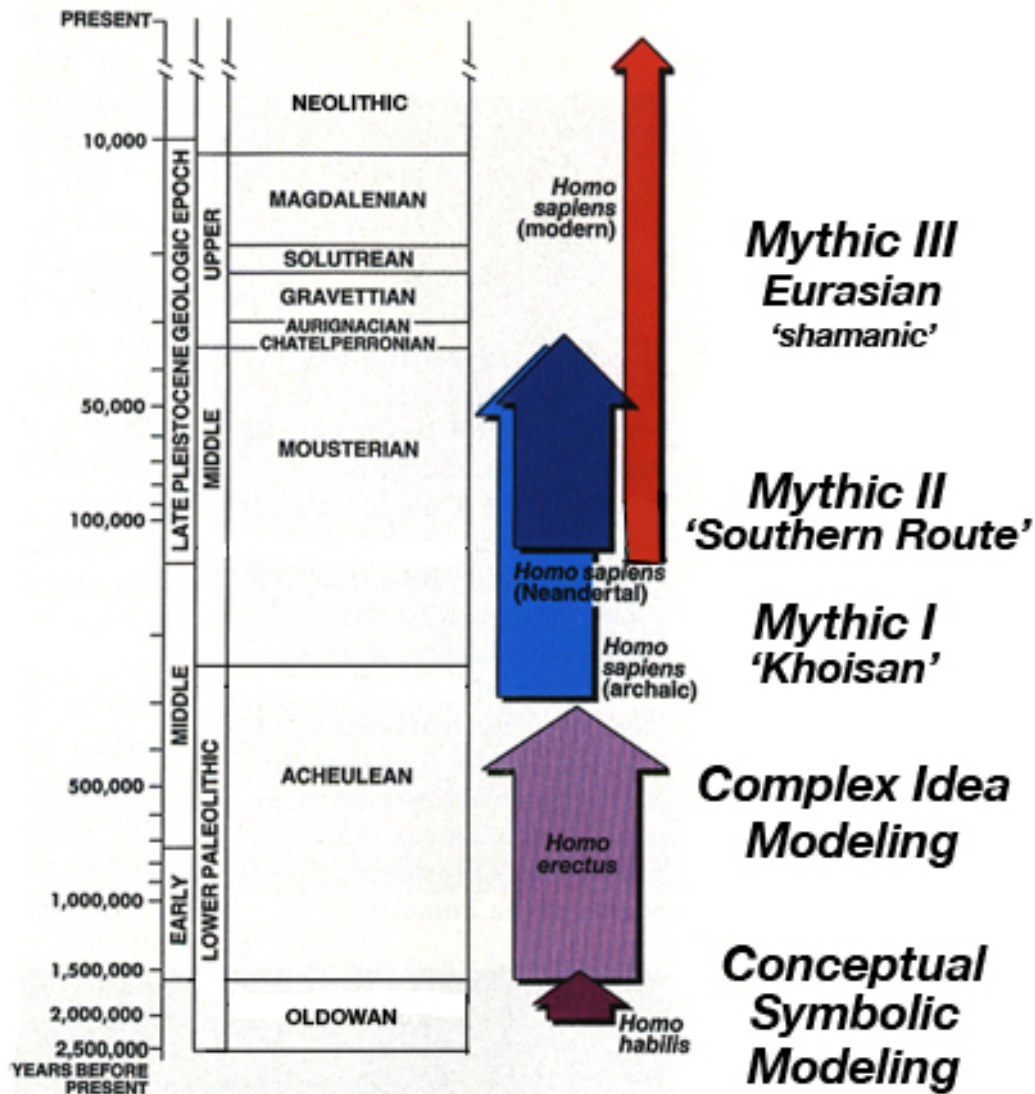
James Harrod, Ph.D.

Adjunct Instructor in Art History, Maine College of Art, Portland, Maine

Director, Center for Research on the Origins of Art and Religion

originsnet.org (pleistocenecoalition.com)

MYTHO-STRATIGRAPHY



4 Meme Model: 2MY Evolution of Art, Symbol & Myth

<i>Era and Techné</i>	<i>Four Meme Model</i> (James Harrod)
<p>Oldowan EO ~2.6 to 2.0 Ma 'Classic' ~2.0 to 1.4 Ma Developed ~1.7 to 1.2 Ma</p>	<p>'Rudimentary Symbolic' = 2.0-3.5 yrs // human = great ape cognition (A. Russon 2004) = <i>Australopithecus</i> (similar cognitive level by triangulation to common great ape ancestor) First 'art object': 'animacy in stone'; 'animated spirit that inhabits the body'</p> <p>Conceptual-Symbolic Modeling = <i>Homo habilis/rudolfensis</i> (out-of-Africa) First Metaphor = 'core-seed-sustenance-essence in interpersonal interaction'; 'rhomboids of the mind' First Ethos = carnivore axis First Joke: 'hit the baboon head' anvil (drill cupules)</p>
<p>Acheulian <i>(sensu lato)</i> EA ~1.7 to 1.0 Ma MA ~1.0 Ma to 500 ka LA ~650 to 200 ka FA ~300 to 150 ka</p>	<p>Complex Idea Modeling = <i>Homo erectus/ergaster</i> (out-of-Africa) Biface pairing of complementary shapes (<i>contraria sunt complementa</i>, Niels Bohr; <i>coincidentia oppositorum</i>, C. G. Jung; 'co-poiesis', Bracha Ettinger) Sheath, the Womb Source of Animacy (Life-Giver) & Vehicle, Cutting Spirit, Energy of Initiative (Death-Giver) colorants, marking traditions, mortuary practice, adornments, anthropomorphs & zoomorphs</p>
<p>Middle Paleolithic / Middle Stone Age EMP ~300 to 40 ka MMP ~150 to 60(100) ka LMP ~60 to 30/35 ka</p>	<p>Mythic I & II EMP = <i>archaic Homo sapiens</i> / MMP = <i>Homo sapiens sapiens</i> (out-of-Africa) Beings of the Dreaming, Creatrix of Life-Forms, stone arrangements, landscape art, image representation, mortuary practices with grave goods; geometric 'signs'</p> <p>I. 'Gaia' (M. Witzel) = Khoisan II. 'Gondwana' (M. Witzel) = 'Southern Route' Africa to SE Asia & Australia</p>
<p>Upper Paleolithic / Later Stone Age EUP ~150 to 60 ka MUP ~40 to 20 ka LUP ~25 to 10 ka</p>	<p>Mythic III = <i>Homo sapiens sapiens</i> (out-of-SW-Central-Asia) 'Eurasian' (Y. Berezkin) 'Laurasian' (M. Witzel) = Shamanic 6 Worlds Shamanism; Soul Journey, Soul Retrieval; Mother-of-Animals, Master-of-Animals; Geometric Protolanguage, UP(E) array of 12 female and 12 male spiritual transformations (J. Harrod)</p>

Templeton (2010, 2002): genetics = 3 waves out-of-Africa – 1.9 Ma; 650 ka; 130 ka; 1 out-of-Asia (recent)

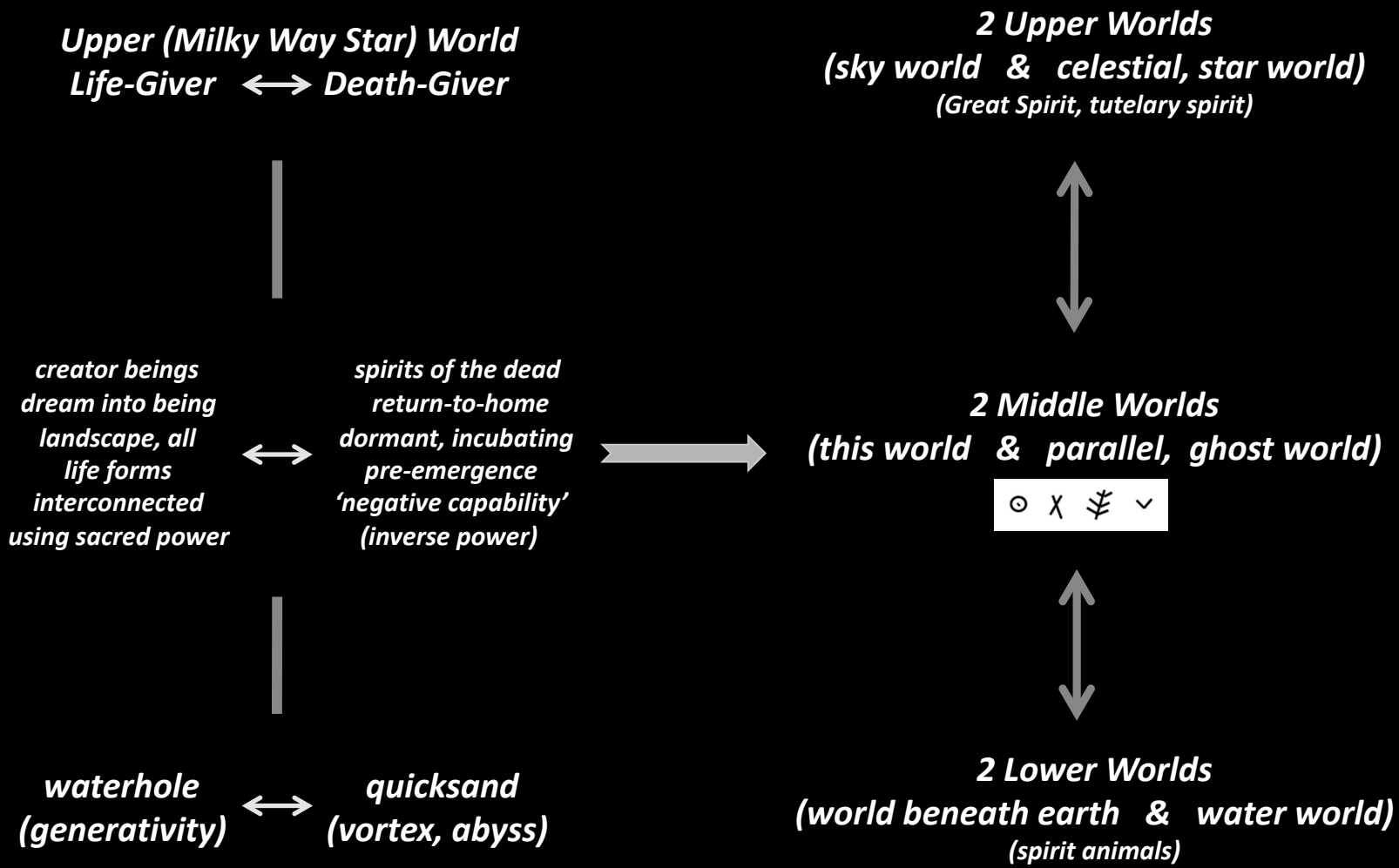


"Maybe someday we could set aside a cave just for art."

**Upper Paleolithic / Later Stone Age
Palaeoart**

4th Meme of the Evolution of Art, Symbol & Myth

<i>Era and Techné</i>	<i>4th Meme: Mythic III = Homo sapiens sapiens</i>
<p>Upper Paleolithic / Later Stone Age EUP ~60 to 150 ka MUP ~40 to 20 ka LUP ~25 to 10 ka</p>	<p>Mythic III: 'Laurasian' (M. Witzel) = 'Shamanic' mythologies</p> <ul style="list-style-type: none">• 6 Worlds: Upper, Middle and Lower Worlds and central Axis Mundi (M. Eliade)• Soul Journey and Soul Retrieval; psychopomp• Mother-of-Animals, Master-of-Animals• Upper Paleolithic (European), UP(E), subset of geometric signs used under application of combinatory matrix to generate array of 6 female and 6 male spiritual transformation processes, their respective symbolization and mythologies (Harrod 2004 a,b online OriginsNet.org; Harrod 1997; Harrod 1987 Valcamonica Symposium paper)



Meme #4 Upper Paleolithic / LSA: Mythic III

Shamanic, 'Laurasian' (M. Witzel)

6-Worlds Shamanism (Soul Journey, Soul Retrieval), Mother-of-Animals, Master-of-Animals

Earth diver emergence; UP(E) arrays of female and male spiritual transformations

European Upper Paleolithic Age

Period	From (years ago)	To (years ago)
Initial UP (Bohunician and Bachokirian)	50,000	40,000
Proto-Aurignacian CI tephra/HE IV ~39-40 kya	45,000	40,000
Aurignacian	40,000	28,000
Gravettian	28,000	22,000
Solutrean	22,000	17,000
Magdalenian	17,000	13,000
Late Magdalenian Younger Dryas 12.8-11.5 kya; impact ~12.9 kya	13,000	10,000
Mesolithic Age	10,000	5,000
Neolithic Age	9,000	5,000
Chalcolithic / Megalithic Age	5,500	3,700
Bronze Age	5,000	3,000



Ice Age Europe

(Marshack A. *The Roots of Civilization* fig.)

EURASIAN—Initial UP
BOHUNICIAN and PROTO-AURIGNACIAN ~50-35 kya

TYPICAL SYMBOLIC ART AND RITUAL TRANSFORMATION SITES

Macrolanguage Family: (U8-mtDNA?) Pre-Hattic & (U4'9-mtDNA?) Pre-Kartvelian?

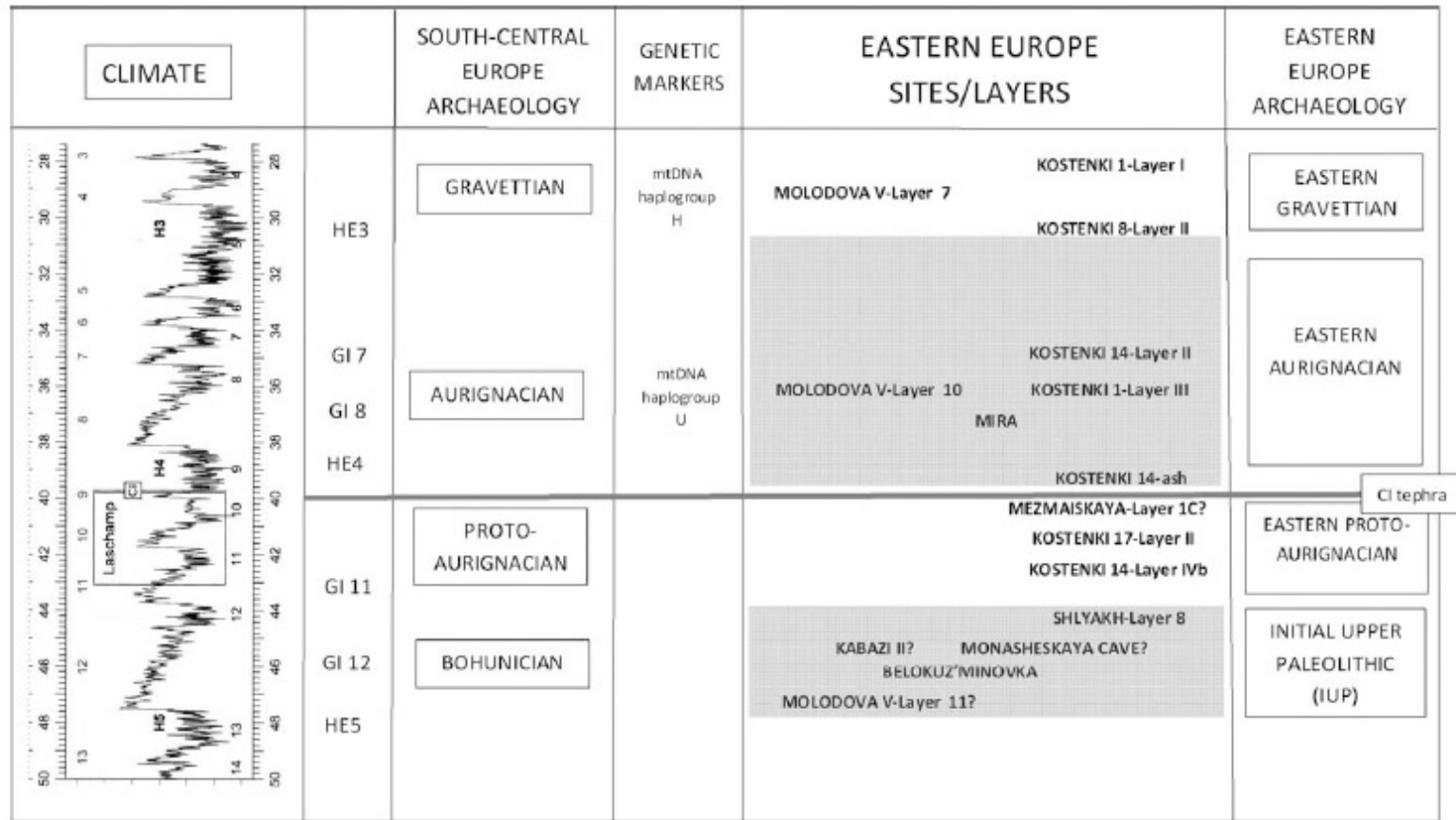


Figure 8. Chronologic and climatic framework for the EUP of eastern Europe showing proposed industrial horizons and selected sites or layers. Climate curve represents stable isotope record from Greenland NGRIP core with calibrated ages, showing position of Laschamp paleomagnetic excursion and CI tephra. The genetic markers are mtDNA haplogroups identified from human remains associated with one site assigned to each technocomplex; future research may reveal other haplogroups associated with specific industries. Climate adapted from Weninger and Jöris⁹⁹ Figure 3.

Kostenki 14-IVb and Kostenki 17-III, Russia, Proto-Aurignacian ~42-40 cal kya

Hoffecker JF. 2011. The Early Upper Paleolithic of Eastern Europe Reconsidered. *Evolutionary Anthropology* 20: 24–39; fig. 8.



Figure 4. Proto-Aurignacian sites in Italy and the Balkans, as well as Kostenki on the central East European Plain, where a broadly similar industry is represented in the same time range (40,000–42,000 cal BP). Also shown is Mezmaiskaya Cave in the northwest Caucasus, which contains an industry similar to the Ahmarian (closely related to the Proto-Aurignacian). The site of Mamontovaya Kurya in northeastern Russia apparently dates to the same period, although it lacks artifacts diagnostic of the Proto-Aurignacian.

Kostenki 14-IVb and Kostenki 17-III, Russia, Proto-Aurignacian ~42-40 cal kya

Hoffecker JF. 2011. The Early Upper Paleolithic of Eastern Europe Reconsidered. *Evolutionary Anthropology* 20: 24–39: fig. 4.

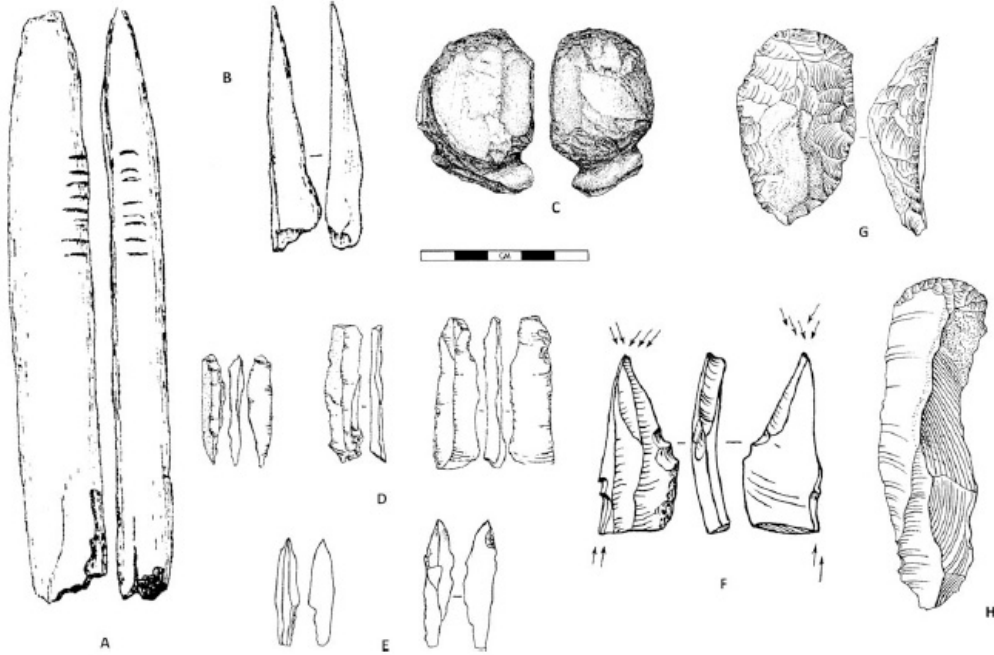


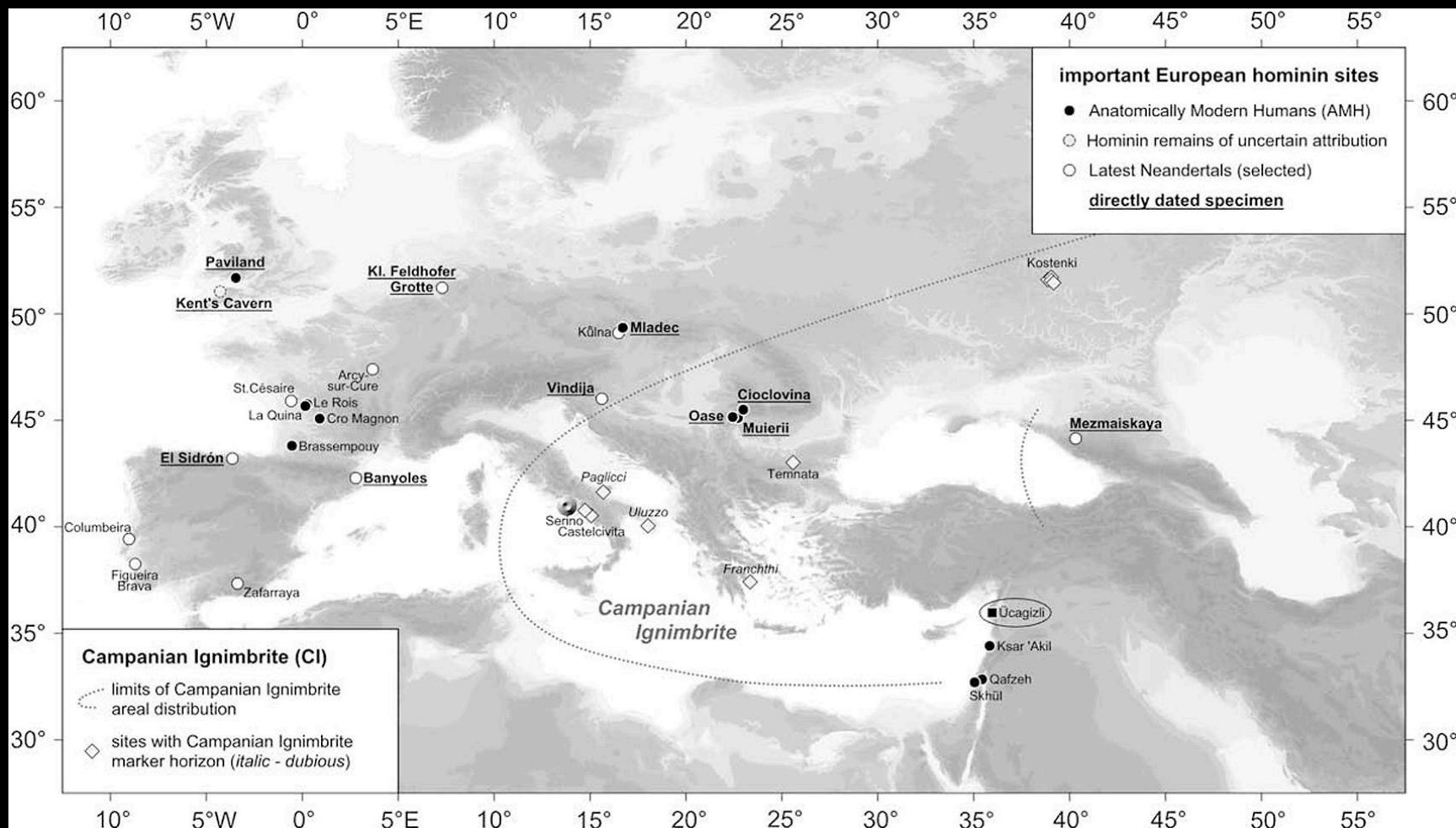
Figure 5. Assemblages buried below the CI tephra at Kostenki 14 (Layer IVb) and Kostenki 17 (Layer II) exhibit some similarities to contemporaneous Proto-Aurignacian assemblages in southern Europe and are provisionally included in an east European variant of this industry. A, bone point from K 14-IVb; B, bone awl from K 14-IVb; C, carved ivory from K 14-IVb; D, bladelets from K 14-IVb; E, small points from K 17-II; F, dihedral burin from K 17-II; G, carinated end-scraper from K 17-II; H, end-scraper on blade from K 17-II after Boriskovskii, Figures. 65, 66, 70; Sinitsyn⁹⁸ Figures 7, 8, 9.



Kostenki 14-IVb and Kostenki 17-III, Russia, Proto-Aurignacian ~42-40 cal kya

Hoffecker JF. 2011. The Early Upper Paleolithic of Eastern Europe Reconsidered. *Evolutionary Anthropology* 20: 24–39; fig. 5.

R: University of Colorado



Campanian Ignimbrite ~40 cal kya

Jöris O, Street M. 2008. At the end of the 14C time scale - the Middle to Upper Paleolithic record of western Eurasia. *Journal of Human Evolution* 55: 782–802. from Donsmaps.

EURASIAN—AURIGNACIAN ~40-28 kya

TYPICAL SYMBOLIC ART AND RITUAL TRANSFORMATION SITES

Macrolanguage Family: (U2-mtDNA) Pre-Dravidian?

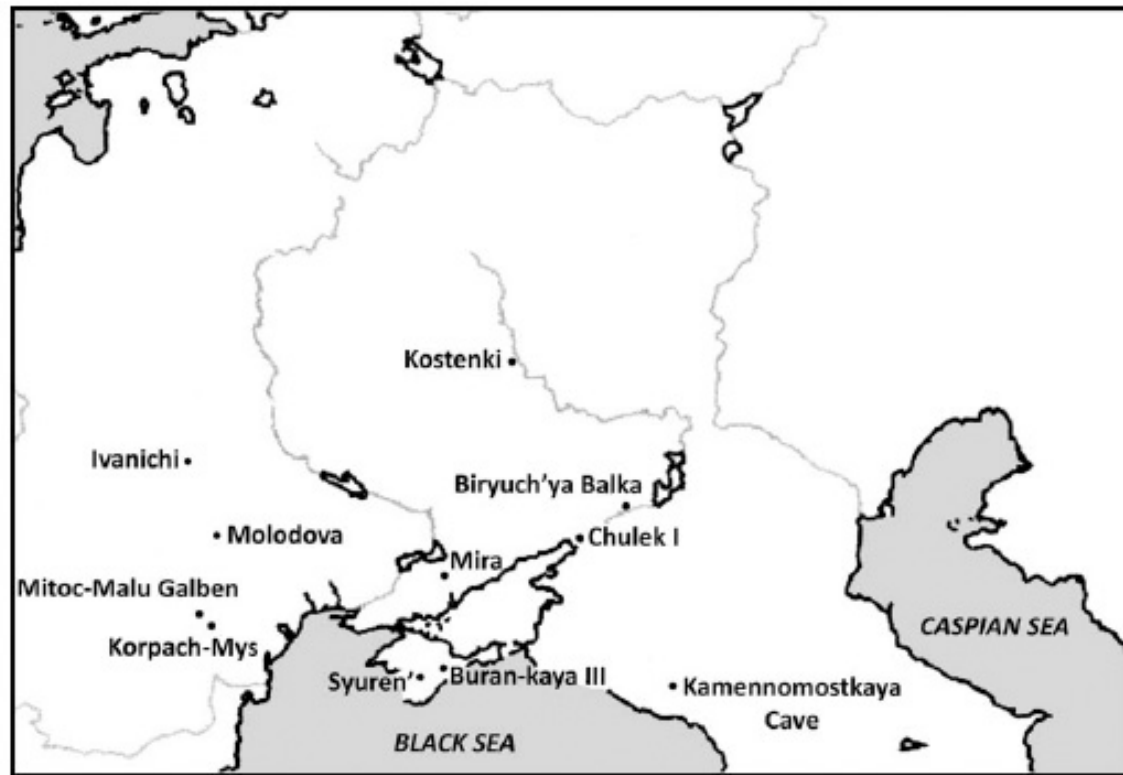


Figure 1. Location of sites assigned to the Aurignacian technocomplex and dating to 40,000–30,000 cal BP, as well as sites assigned to various contemporaneous local industries including Goroditsovan, Streletskayan, and Molodovan. These are incorporated here into an Eastern Aurignacian that includes artifacts associated with the killing and butchering of large mammals.

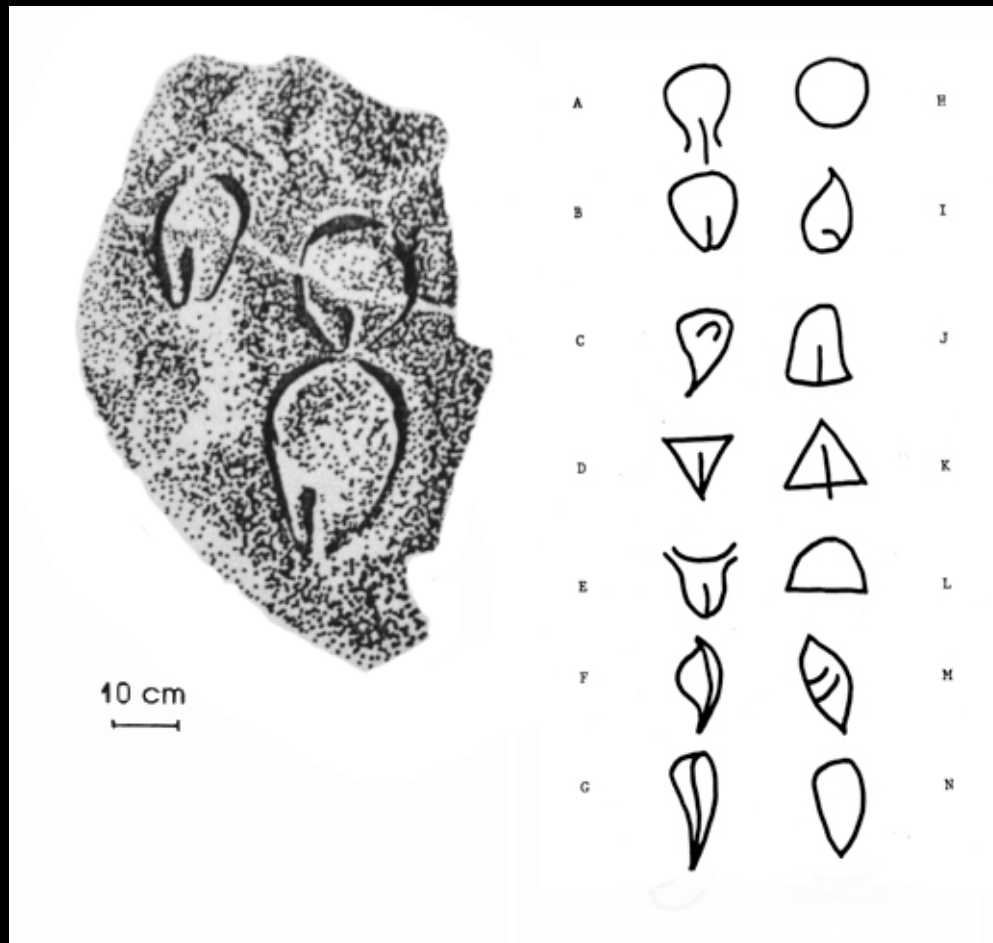
Kostenki 14-IVb and Kostenki 17-III, Russia, Aurignacian ~30-40 cal kya

Hoffecker JF. 2011. The Early Upper Paleolithic of Eastern Europe Reconsidered. *Evolutionary Anthropology* 20: 24–39: fig. 1.



Aurignacian sites with art in the 'Chauvet style'

Clottes J., Gély B., Ghemis C., Kaltnecker É., Lascu V.-T. et al. 2011. Un art très ancien en Roumanie. Les dates de Coliboaia, INORA, n°61: 1-3.



Aurignacian 'vulva-seed' ('uterus womb', 'teardrop') signs

L: Castelmerle, Dordogne H: 97.4cm. R: A Abri Cellier; B Abri Blanchard; C La Portel; D Bédeilhac; E Arcy-sur-Cure; F Ussat; G Les Combarelles; H Pech Merle; I Altamira; J El Castillo; K La Mouthe; L: El Castillo; M Ussat; N Isturitz.

Drawings: Patricia Reis after A. Leroi-Gourhan

Interpretation: Marija Gimbutas, 'cosmic womb', 'source of the waters of life', 'of the sprouting of life', and 'giving of birth'
 James Harrod, 'teardrop' shape, 'source of all sorrow and joy of life', compare converse gendered Egyptian Atum who emerges from primordial sea as a mound (*benben*) and from own seed makes air and moisture, Shu and Tefnut, and from own tears creates humanity.

LION	BEAR
RHINO	MAMMOTH
HORSE	BISON
IBEX	DEER

Symbolic Animals of the Aurignacian 'Mandala'

Possible Gender Coding L: Male, R: Female. Interpretation: James Harrod



'Lion Bear Mammoth Rhino'. Aldène , Hérault, France, Aurignacian ~36-39 kya

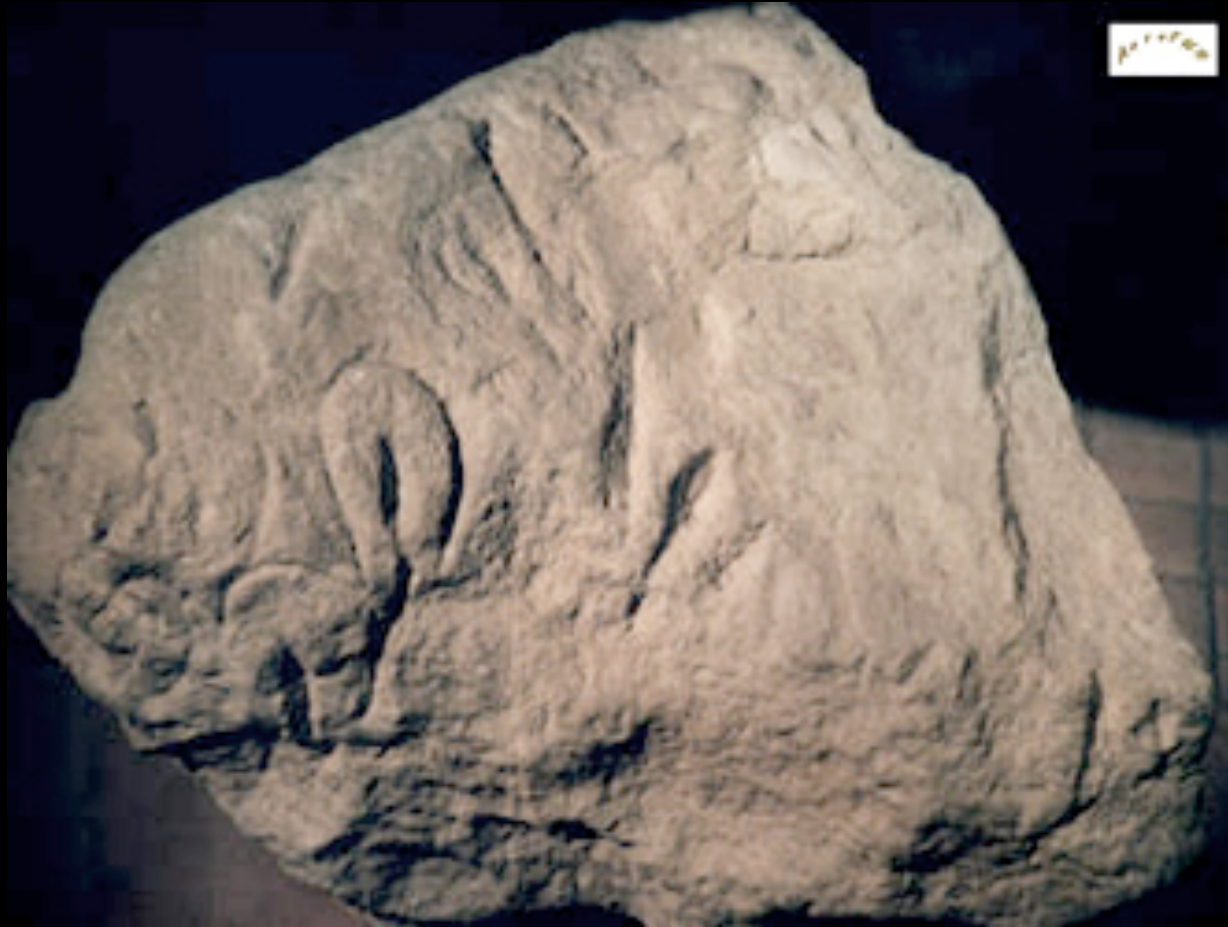
Gravures de vulves de l'abri du Cellier à Tursac
Interpretation: 'bison' facing left, James Harrod



Abri Cellier, Dordogne, France, Aurignacian ~36-39 kya

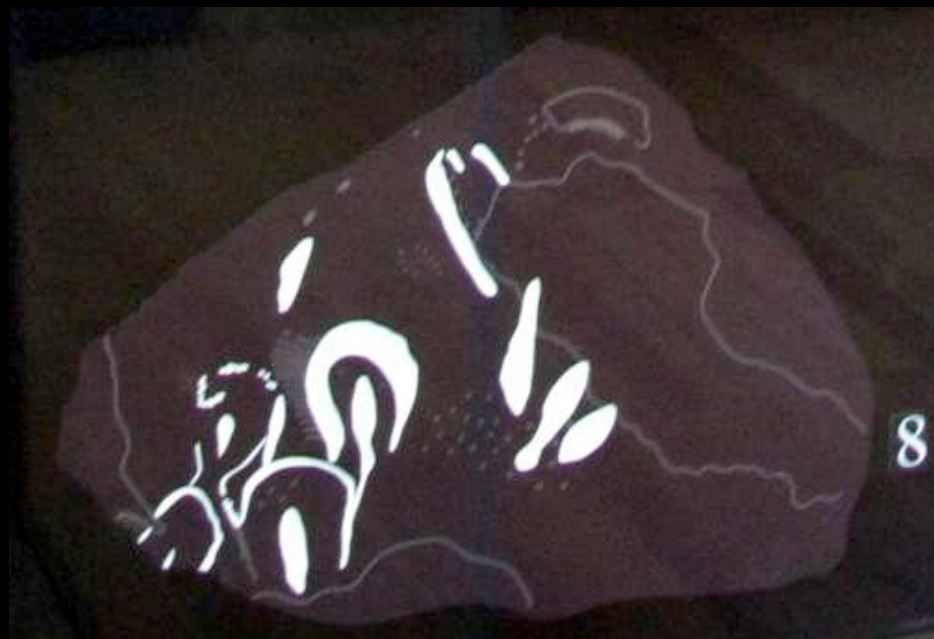
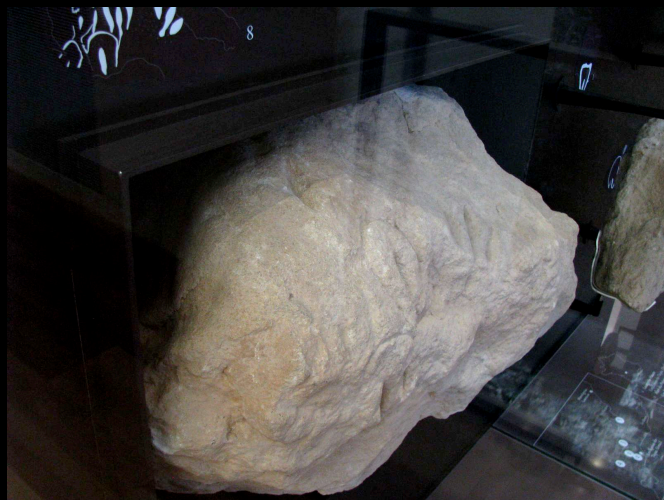
Date, compare Higham et al (2011). Top L: wolf canine, 5.5cm; cicumincising or rainurage for cord or thong, unusual, most such items were pierced; Peyrony 1946. Top Center: bone or ivory fragment, worked end, 5.1cm. Top Right: decorated avian bone 7.2cm. Bottom L: decorated bone, 16.2cm. Bottom Right: serrated rib bone, 3.9cm, knife?, common type, also at Abri Blanchard. Exhibition, Logan Museum, Beloit University

http://www.beloit.edu/logan_online/exhibitions/virtual_exhibitions/before_history/europe/abri_cellier.php



'Vulva-seeds, Tri-line, '?Zoomorphs'. Abri Cellier, Dordogne, France, Aurignacian ~36-39 kya

Gravures de vulves de l'abri du Cellier à Tursac
Interpretation: 'bison' facing left, James Harrod



'Vulva-seeds, Tri-line, '?Zoomorphs'. Abri Cellier, Dordogne, France, Aurignacian ~36-39 kya
Photo: Don Hitchcock 2008 from Donsmaps.com



'Vulva-seeds, Tri-line, '?Zoomorphs'. Abri Cellier, Dordogne, France, Aurignacian ~36-39 kya

Photo: Don Hitchcock 2008 from Donsmaps.com

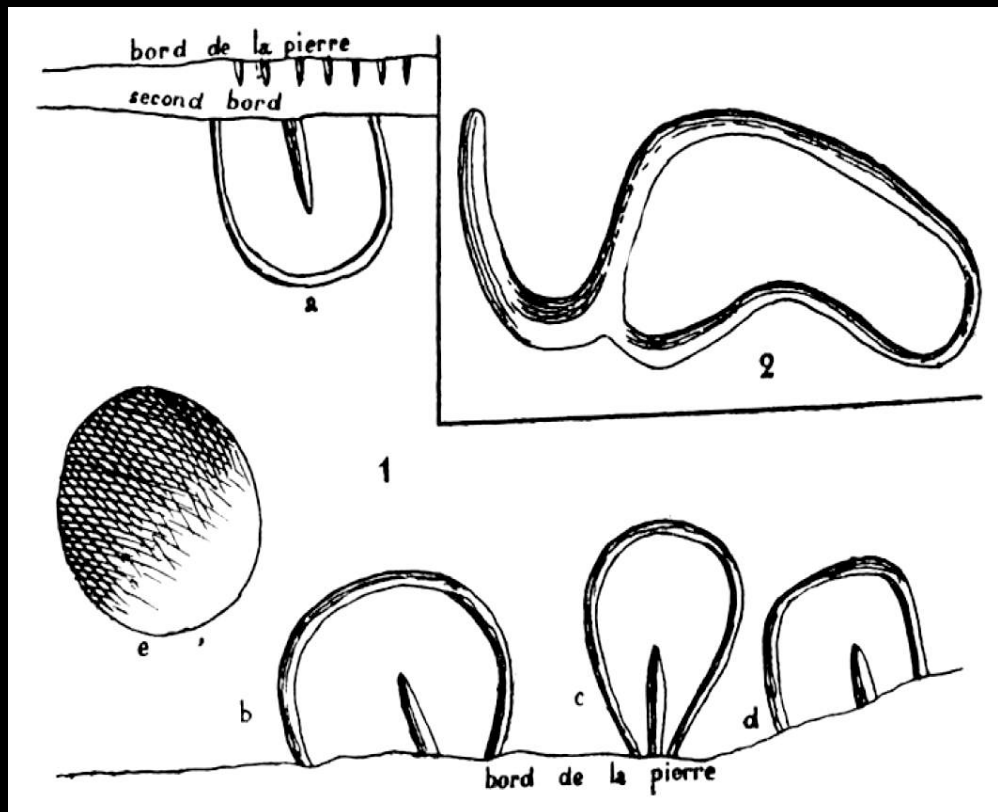
Interpretation: 'lion', James Harrod



“Vulva-seeds, Tri-line, ‘?Zoomorphs’. Abri Cellier, Dordogne, France, Aurignacian ~36-39 kya

Photo: Don Hitchcock 2008 from Donsmaps.com

Interpretation: ‘lion’, James Harrod

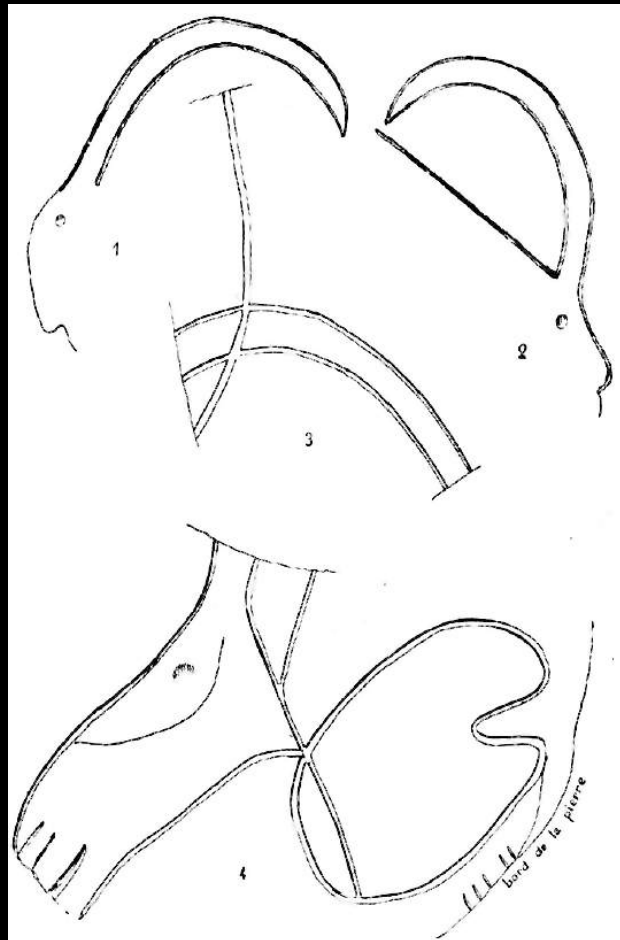


1: Block 'vulva-seeds, cupule, ~7 incisions. 2: Small stone '?Rhino'.

Abri Cellier, Dordogne, France, Aurignacian ~36-39 kya

Peyrony (1946: Fig. 5) from Donsmaps.com

Interpretation: 'rhino' (and not' male genital organ', unless metaphor for both), James Harrod

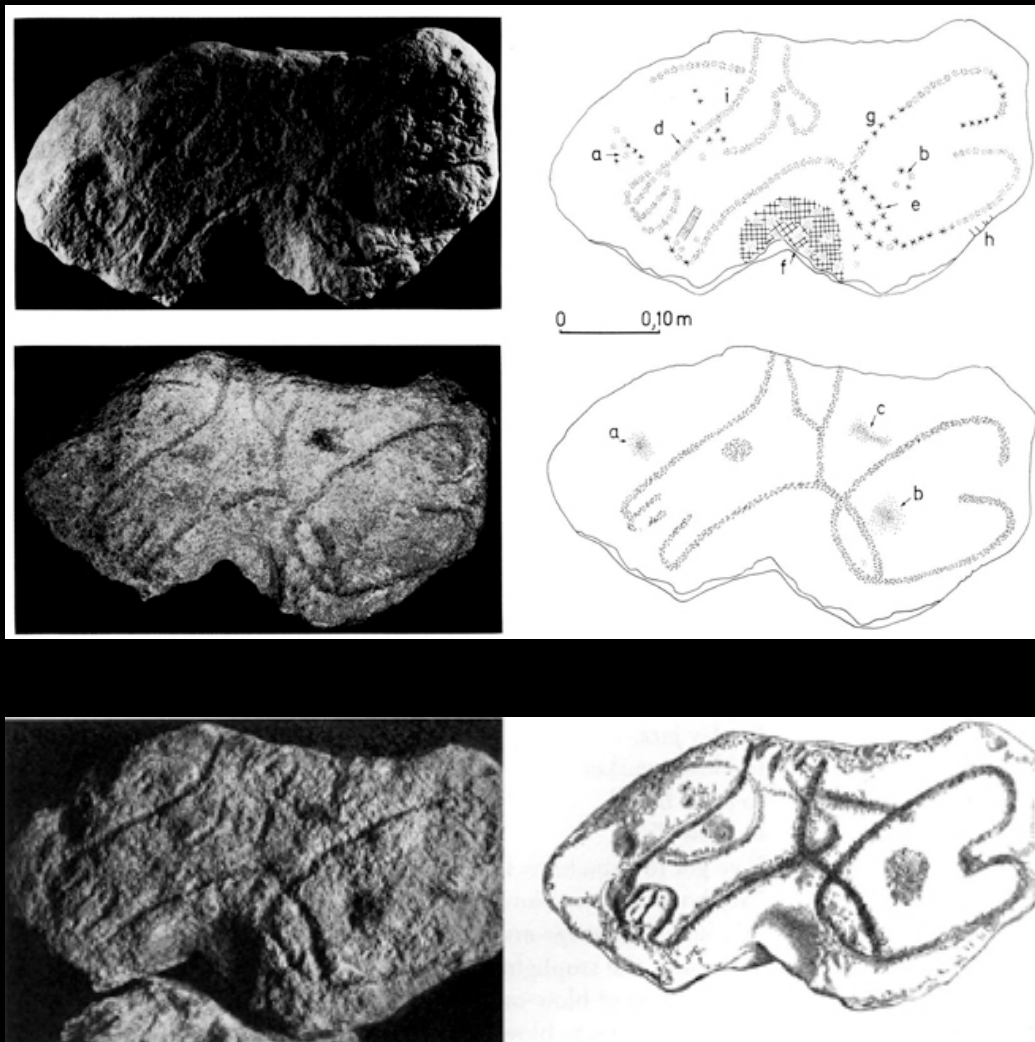


1 and 2: Two blocks, each with engraved Ibex, and a third set of curved lines, maybe 3rd ibex'.

Block #2: 'horsehead' and 'vulva' and incisions.

Abri Cellier, Dordogne, France, Aurignacian ~38 kya

Peyrony (1946: Fig. 4) from Donsmaps.com



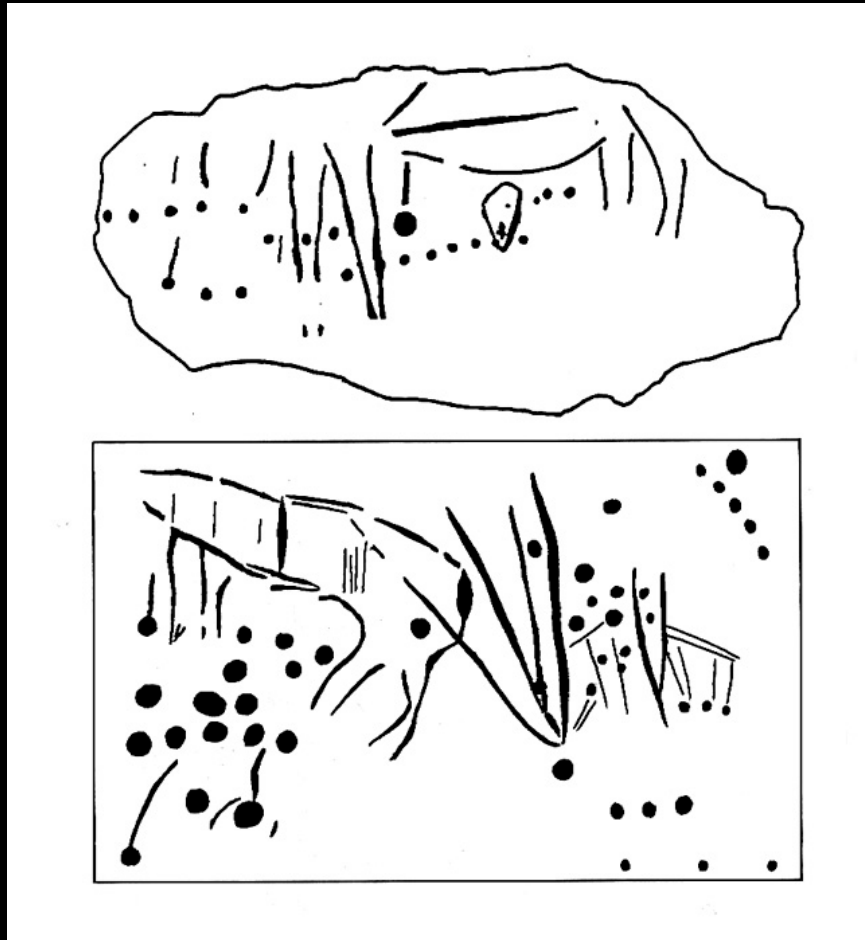
Block #2: 'horse' and 'vulva' with dots/cupules. Abri Cellier, Dordogne, France, Aurignacian ~36-39 kya

Top: Peyrony (1946: Fig. 4) from Donsmaps.com

Bottom: Clayton Eshelman; claytoneshelman.com/matrix from Donsmaps

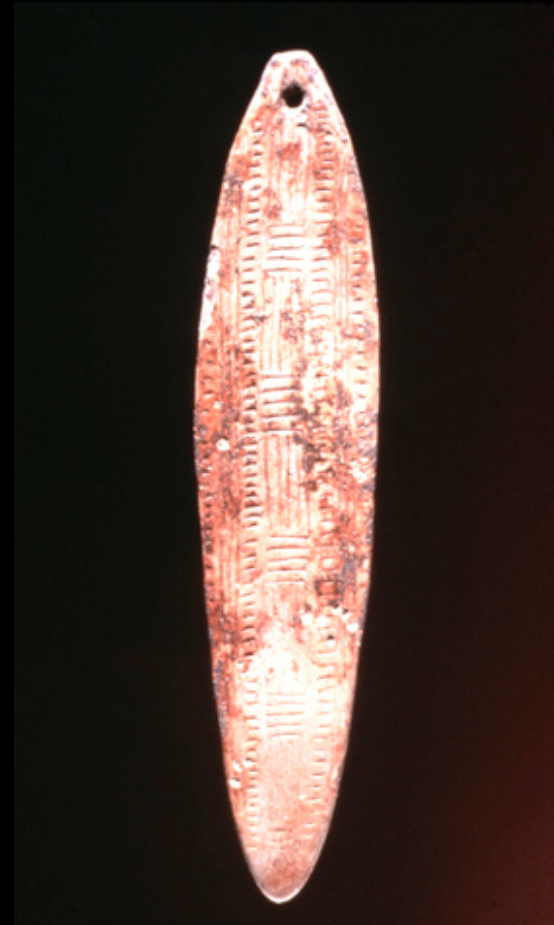
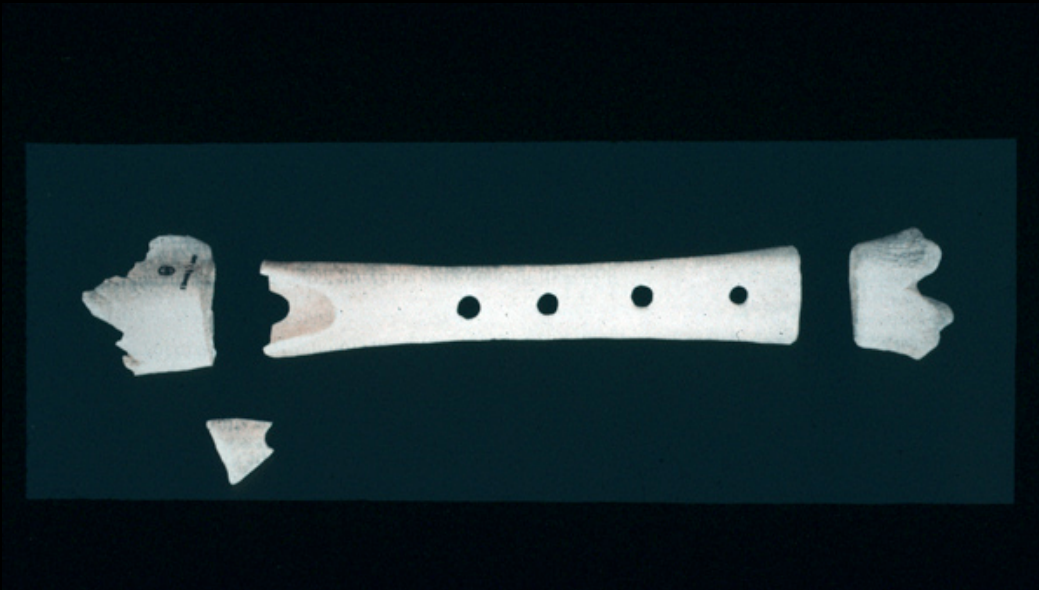


'Cupules, Zoomorph, Pubic Triangle', La Ferrassie, Aurignacian



'Cupules, Zoomorph, Vulva-Seed-Triangle', La Ferrassie, Aurignacian

Drawings: Emmanuel Anati



L: Flute replica, L'Abri Blanchard, Aurignacian ~35 ka

(White, Randall. *Dark Caves, Bright Visions* fig 136)

R: 'Bullroarer', La Roche a Lalinde (Dordogne), Magdalenian

Reindeer antler object covered with red ochre, linear/geometric engraving, often compared to 'bullroarers'
(Musee des Antiquities Nationales (c) American Museum of Natural History)

Galgenberg, Krems-Rehberg/Stratzing, Austria



Galgenberg Site, Krems-Rehberg/Stratzing, Austria, Aurignacian ~30 kya

Excavation 1988. Image from Dons Maps. Source: www.stratzing.at/content/3/015



'Trance' Figurine, Galgenberg, Krems-Rehberg/Stratzing, Austria, Aurignacian ~30 kya
Schistic amphibolite; H: 7.2cm. Excavation 1988. Image from Dons Maps. Photo: A. Schumacher. *Neubebauer-Maresh 2008*.
Interpretation: Felicitas Goodman: trance posture, energy connection axis earth to sky worlds, repair tear or unbalance in cosmos

Chauvet Cave, Ardèche Gorge, SE France



Ardèche Gorge, SE France

Photo: Tjarko Evenboer Google Earth, from donsmaps.com



Pont d'Arc, Ardèche Gorge, SE France
Wiki Commons from Donsmaps.com



Cliff Edge, Chauvet Cave, Ardèche Gorge, SE France
National Geographic (Aug 2001) from Donsmaps.com



Stalagmite Cascade 'Mammoth', Entrance and Brunel Chamber, Chauvet, Aurignacian, ~32.5-30 kya

L: map III.57. Clottes J and (transl.) Bahn P. 2003. *Chauvet Cave: The art of earliest times*

C and R: Photo: Baffier D and Feruglio V. www.culture.gouv.fr



Signs Panel L Wall (no. 35), Brunel Chamber, Chauvet, Aurignacian, ~32.5-30 kya

R: map III.58. Clottes J and (transl.) Bahn P. 2003. *Chauvet Cave: The art of earliest times*

L: Photo: Baffier D and Feruglio V. www.culture.gouv.fr



L 'Wall of Dominoes' (no. 30), Brunel Chamber, Chauvet, Aurignacian, ~32.5-30 kya
Feline black; red barbed sign, 6+2+5=13 Dots red; 'bell' recess; red lines, strokes, traces; ?headless ?cervid or Ibex
L R C and Bottom: Photos: Yanik Le Guillou; Baffier D and Feruglio V. www.culture.gouv.fr



'Alcove of the Yellow Horses' (no. 31), Brunel Chamber, Chauvet, Aurignacian, ~32.5-30 kya

L: Large Panel of Red Dots (female or adolescent palm). R: 3 Yellow Horses, 6 Red Dots, Tri-Line, 5 vertical dots, ?arcs

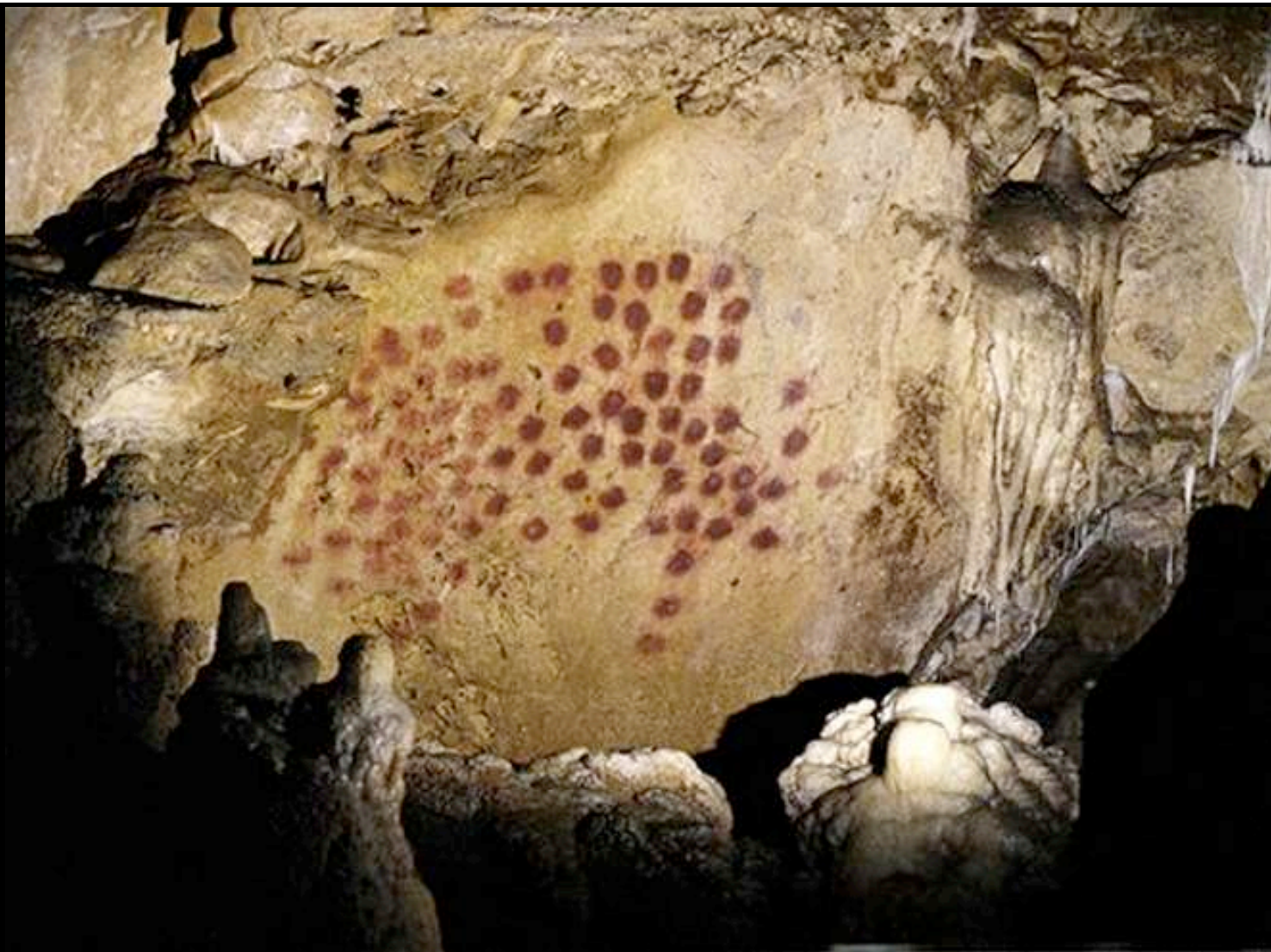
L R : Photos: Baffier D and Feruglio V. www.culture.gouv.fr

Bottom: Ill. 62. Clottes J and (transl.) Bahn P. 2003. *Chauvet Cave: The art of earliest times*

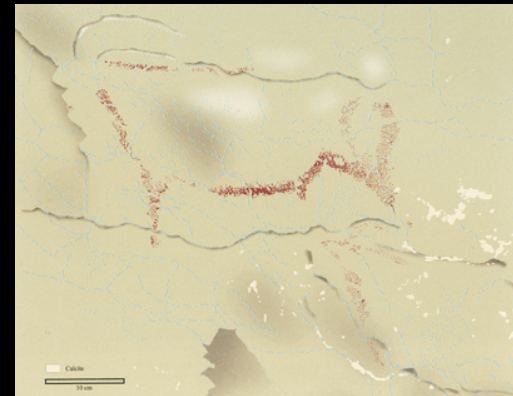


'Panel of the Dotted Animal' (no. 32), Brunel Chamber, Chauvet, Aurignacian, ~32.5-30 kya

L R : Photo: Baffier D and Feruglio V. www.culture.gouv.fr



'Panel of the Dotted Animal' (no. 32), Brunel Chamber, Chauvet, Aurignacian, ~32.5-30 kya
?Bear head right profile, using natural fissure; indet. animal facing right (?mammoth, ?rhino or ?bison)
Photo from donsmaps after crytical.com



'Recess of Bears' (no. 33), Brunel Chamber, Chauvet, Aurignacian, ~32.5-30 kya
Squeeze into Small Rotunda. L Wall: 3 Cave Bears. R Wall: 2 Ibex, using natural fissures and red ochre

R: Ill. 65 and 64. Clottes J and (transl.) Bahn P. 2003. *Chauvet Cave: The art of earliest times*

L Top and Bottom: Photo: Baffier D and Feruglio V. www.culture.gouv.fr



'Panther Panel' (no. 28), Red Panels Gallery, Chauvet, Aurignacian, ~32.5-30 kya
3 Bears, 2 Felines, 2 Ibex at either end of panel, 3 indet.; base of wide deep hollow: 1 red dot
L: Ill. 66. R: Ill. 71. Clottes J and (transl.) Bahn P. 2003. *Chauvet Cave: The art of earliest times*



'Panel of Signs' (no. 27), Red Panels Gallery, Chauvet, Aurignacian, ~32.5-30 kya
7 Double-Lobe Signs (some w/oblique dash; ?butterfly), 1 'Insect' Sign rectangle w/6 curved lines;
more dots, lines; ?bison/aurochs

C: Ill. 74. Clottes J and (transl.) Bahn P. 2003. *Chauvet Cave: The art of earliest times*



'Panel of Hand Prints' (no. 26), 12m, Red Panels Gallery, Chauvet, Aurignacian, ~32.5-30 kya
Frieze of the 5 red rhinoceroses, 'W'-sign
8 Felines, 1 Mammoth, 1 Horse, 1 Rhino, 5 hand prints 2 stencils; ~10 dots;
Circle w/semicircle top and bordered with 12 dots; vertical zigzag, 'W', rhino, hook-shaped line, dots;
C: Ill. 75. Clottes J and (transl.) Bahn P. 2003. *Chauvet Cave: The art of earliest times*



'Horse Sector', Gallery of the Crosshatching, Chauvet, Aurignacian, ~32.5-30 kya
L: Ill. 100. C: Ill. 109. Clottes J and (transl.) Bahn P. 2003. *Chauvet Cave: The art of earliest times*
C and R: Photo: Baffier D and Feruglio V. www.culture.gouv.fr



'Horse Sector', Gallery of the Crosshatching, Chauvet, Aurignacian, ~32.5-30 kya
C: III. 102. Clottes J and (transl.) Bahn P. 2003. *Chauvet Cave: The art of earliest times*



'Horse and 2 Mammoth', engraved at back, Gallery of the Crosshatching, Chauvet, Aurignacian, ~32.5-30 kya
C: Ill. 99. Clottes J and (transl.) Bahn P. 2003. *Chauvet Cave: The art of earliest times*



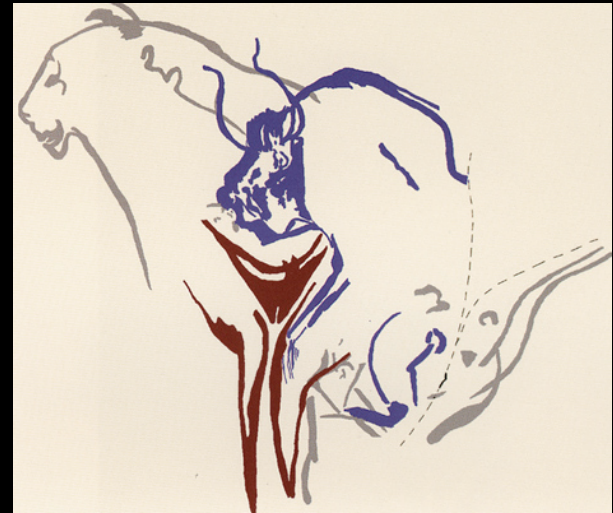
'Mammoth', End Chamber, Chauvet, Aurignacian, ~32.5-30 kya
L: Ill. 123. Clottes J and (transl.) Bahn P. 2003. *Chauvet Cave: The art of earliest times*
Center: after image from Donsmaps.com



Bison-Man/Bison-Woman, pubic triangle, Chauvet, Aurignacian ~32.5-30 kya

Source: donsmaps.com, after Clottes J and (transl.) Bahn P. 2003. *Chauvet Cave: The art of earliest times*

Photo: Yanik Le Guillou



'Woman/Bison/Lion', Pendant, End Chamber, Chauvet, Aurignacian, ~32.5-30 kya
L: Ill. 163. R: Ill. 164. Clottes J and (transl.) Bahn P. 2003. *Chauvet Cave: The art of earliest times*
Photo and schematic sketch: Yanik Le Guillou

Höhlenstein-Stadel
Vogelherd
Geissenklösterle
Upper Danube, Swabian Jura, Germany



Site, Vogelherd, Germany, Aurignacian ~28-36 kya

5 mammoths, 3 felines, 4 'carnivores', 1 bovid, 1 indet, 1 anthro = 15 figurines on mammoth ivory and bone

Photo: from Spiegel (online)



'Mammoth', Vogelherd, Germany, Aurignacian ~28-36 (30-32) kya
in sediment, excavation 1931

Photo: Conard NJ; from *Spiegel* (online)



'Mammoth', Vogelherd, Germany, Aurignacian ~28-36 (30-32) kya
6 short incisions, crosshatch on feet, 3.7cm

Photo: Conard NJ; from *Spiegel* (online)



'Mammoth', Vogelherd, Germany, Aurignacian ~28-36 (30-32) kya
6 short incisions, crosshatch on feet, 3.7cm

Photo: Conard NJ; from *Spiegel* (online)



'Mammoth' (2), Vogelherd, Germany, Aurignacian ~28-36 (30-32) kya
~12 X-signs

Photo: Conard NJ; from *Spiegel* (online)



'Lion', Vogelherd, Germany, Aurignacian ~28-36 (30-32) kya
~30 X-signs, 5.6cm

Photo: Conard NJ; from *Spiegel* (online)



'Lionhead', X-signs, Vogelherd, Germany, Aurignacian ~28-36 (30-32) kya
~30 X-signs, 2.5cm

Guy E. 2012. Le style Chauvet: une beauté fatale? Fig. 3 (online) from no source

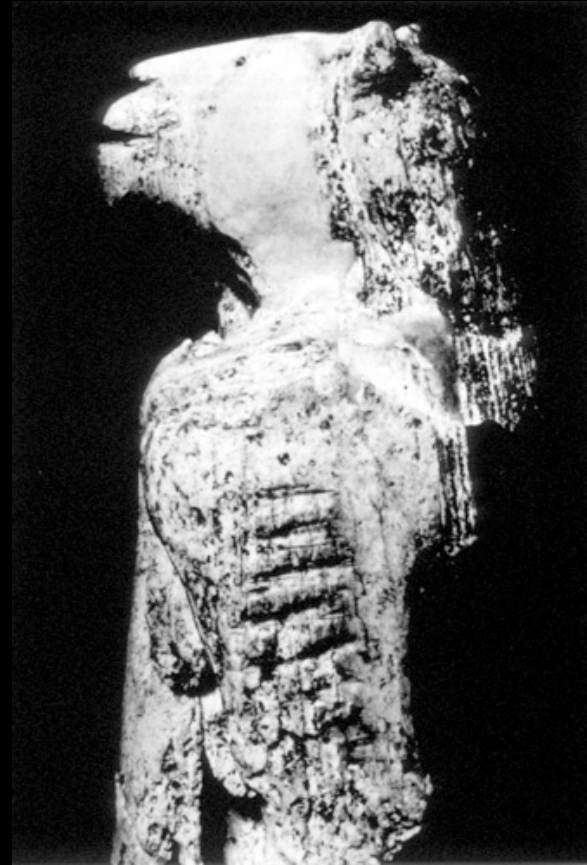
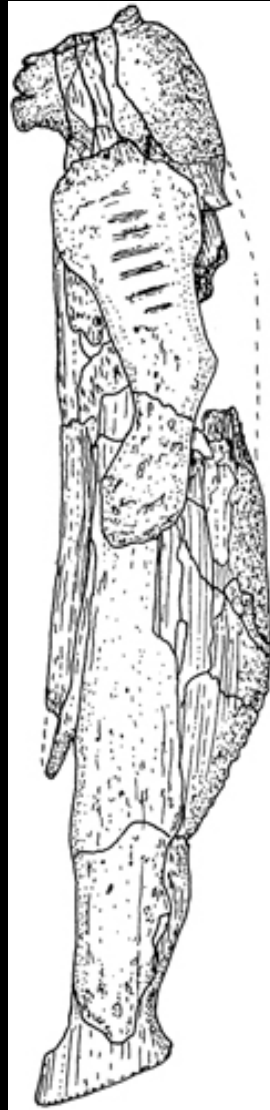


'Flute', Geissenklösterle Level II, Germany, Upper Aurignacian ~29-36 kya (scatter)
(4 bone carvings: bear, mammoth, bovid, anthropomorph relief obverse dot marks; flute;
oval antler pendant with stroke marks, ivory beads, 1 ivory pierced baton)
Level III, ~29-40 kya (scatter), Perforated fox canines, ivory pendants, ivory beads
(Hahn 1982; Conard 2003) Photo: Jensen H



'Lion-Man', Höhlenstein-Stadel, Germany, Aurignacian ~31-32 kya
Carving on tip of mammoth tusk ivory; 28cm

L: Bahn P and Vertut J. 1997. *Journey Through the Ice Age* fig 7.21. R: photo Marshack A. 1988. *National Geographic Oct. 1988*: np



'Lion-Man', Höhlenstein-Stadel, Germany, Aurignacian ~31-32 kya

Carving on tip of mammoth tusk ivory; 28cm

L: drawing, Anya, *Agenda de la Préhistoire 2002-2003*, Don's Maps (online). R: photo Davidson I. 1990. *Rock Art Research 7,1*: back cover



'Orion' or anthropomorph, 5 or 6 stroke marks on arm; obverse ~87 dot marks', relief 3.8cm
Geissenklösterle Level II, Germany
Upper Aurignacian ~29-36 kya

(Hahn 1982; Conard 2003) Photo: donsmaps.com (online) based on image from Landesmuseum Württemberg
Michael Rappenglück, *Science* 299,5608: 817: Orion's brightest star, Betelgeuse, invisible below horizon 3 months each year for 87
nights. But contra too erode and deeply incised lines on L arm, and compare lion-man and Galgenberg Pettitt 2003)



Female Figurine, Hohle Fels, Germany
Photo: Conard NJ